



[Go to Product page](#)

Datasheet for ABIN565234
anti-SEN3 antibody (AA 301-400)

1 Image

Overview

Quantity:	50 µL
Target:	SEN3
Binding Specificity:	AA 301-400
Reactivity:	Human
Host:	Mouse
Clonality:	Polyclonal
Conjugate:	This SEN3 antibody is un-conjugated
Application:	Western Blotting (WB), ELISA

Product Details

Purpose:	Mouse polyclonal antibody raised against a partial recombinant SEN3.
Immunogen:	SEN3 (NP_056485, 301 a.a. ~ 400 a.a) partial recombinant protein with GST tag.
Sequence:	EKAGQHSPLR EEHVTCVQSI LDEFLQTYGS LIPLSTDEVV EKLEDIFQQE FSTPSRKGLV LQLIQSYQRM PGNAMVRGFR VAYKRHVLTM DDLGTYGQN
Cross-Reactivity:	Human
Characteristics:	Antibody Reactive Against Recombinant Protein.

Target Details

Target:	SEN3
Alternative Name:	SEN3 (SEN3 Products)

Target Details

Background:	Full Gene Name: SUMO1/sentrin/SMT3 specific peptidase 3 Synonyms: DKFZp586K0919,DKFZp762A152,SMT3IP1,SSP3
Gene ID:	26168
NCBI Accession:	NM_015670

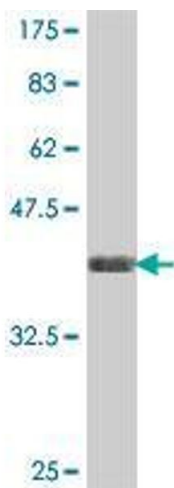
Application Details

Application Notes:	Optimal working dilution should be determined by the investigator.
Restrictions:	For Research Use only

Handling

Format:	Liquid
Buffer:	50 % glycerol
Handling Advice:	Aliquot to avoid repeated freezing and thawing.
Storage:	-20 °C
Storage Comment:	Store at -20°C or lower. Aliquot to avoid repeated freezing and thawing.

Images



Western Blotting

Image 1. Western Blot detection against Immunogen (37.11 kDa).