

Datasheet for ABIN565251
anti-CLEC4E antibody (AA 1-219)



[Go to Product page](#)

2 Images

2 Publications

Overview

Quantity:	100 µg
Target:	CLEC4E
Binding Specificity:	AA 1-219
Reactivity:	Human
Host:	Mouse
Clonality:	Monoclonal
Conjugate:	This CLEC4E antibody is un-conjugated
Application:	Western Blotting (WB), ELISA

Product Details

Purpose:	Mouse monoclonal antibody raised against a full length recombinant CLEC4E.
Immunogen:	CLEC4E (AAH00715, 1 a.a. ~ 219 a.a) full-length recombinant protein with GST tag. MW of the GST tag alone is 26 KDa.
Sequence:	MNSSKSSETQ CTERGCFSSQ MFLWTVAGIP ILFLSACFIT RCVVTRIFQ TCDEKKFQLP ENFTELSHCYN YGSGSVKNCC PLNWEYFQSS CYFFSTDTIS WALSLKNCSA MGAHLVVINS QEEQFLSYK KPKMREFFIG LSDQVVEGQW QWVDGTPLEK SLSFWDVGEF NNIATLEDCA TMRDSSNPRQ NWNDVTCFLN YFRICEMVGI NPLNKGKSL
Clone:	2D12
Isotype:	IgG2a
Cross-Reactivity:	Human

Product Details

Characteristics: Antibody Reactive Against Recombinant Protein.

Target Details

Target: CLEC4E

Alternative Name: CLEC4E ([CLEC4E Products](#))

Background: Full Gene Name: C-type lectin domain family 4, member E
Synonyms: CLECSF9,MINCLE

Gene ID: 26253

Application Details

Application Notes: Optimal working dilution should be determined by the investigator.

Restrictions: For Research Use only

Handling

Buffer: In 1x PBS, pH 7.4

Handling Advice: Aliquot to avoid repeated freezing and thawing.

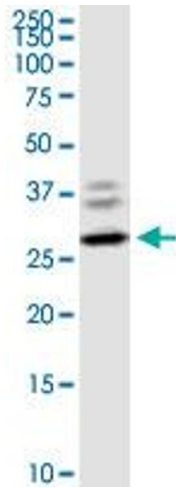
Storage: -20 °C

Storage Comment: Store at -20°C or lower. Aliquot to avoid repeated freezing and thawing.

Publications

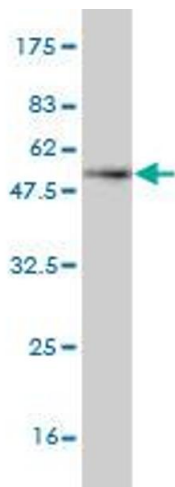
Product cited in: Kawata, Illarionov, Yang, Kenny, Zhang, Tsuda, Ando, Leung, Ansari, Eric Gershwin: "Mincle and human B cell function." in: **Journal of autoimmunity**, Vol. 39, Issue 4, pp. 315-22, (2012) ([PubMed](#)).

Bugaric, Hitchens, Beckhouse, Wells, Ashman, Blanchard: "Human and mouse macrophage-inducible C-type lectin (Mincle) bind *Candida albicans*." in: **Glycobiology**, Vol. 18, Issue 9, pp. 679-85, (2008) ([PubMed](#)).



Western Blotting

Image 1. CLEC4E monoclonal antibody (M08), clone 2D12.
Western Blot analysis of CLEC4E expression in K-562.



Western Blotting

Image 2. Western Blot detection against Immunogen (49.83 kDa).