

Datasheet for ABIN565268
anti-SERGEF antibody (AA 240-337)[Go to Product page](#)

1 Image

Overview

Quantity:	100 µg
Target:	SERGEF
Binding Specificity:	AA 240-337
Reactivity:	Human
Host:	Mouse
Clonality:	Monoclonal
Conjugate:	This SERGEF antibody is un-conjugated
Application:	ELISA

Product Details

Purpose:	Mouse monoclonal antibody raised against a partial recombinant DELGEF.
Immunogen:	DELGEF (NP_036271, 240 a.a. ~ 337 a.a) partial recombinant protein with GST tag. MW of the GST tag alone is 26 KDa.
Sequence:	KHGQLANEAA FLPVPQKIEA HCFQNEKVTA IWSGWTHLVA QTETGKMFTW GRADYGQLGR KLETYEGWKL EKQDSFLPCS RPPNSMPSSP HCLTGATE
Clone:	1A2
Isotype:	IgG1
Cross-Reactivity:	Human
Characteristics:	Antibody Reactive Against Recombinant Protein.

Target Details

Target:	SERGEF
Alternative Name:	SERGEF (SERGEF Products)
Background:	Full Gene Name: secretion regulating guanine nucleotide exchange factor Synonyms: DELGEF,Gnefr
Gene ID:	26297
NCBI Accession:	NM_012139

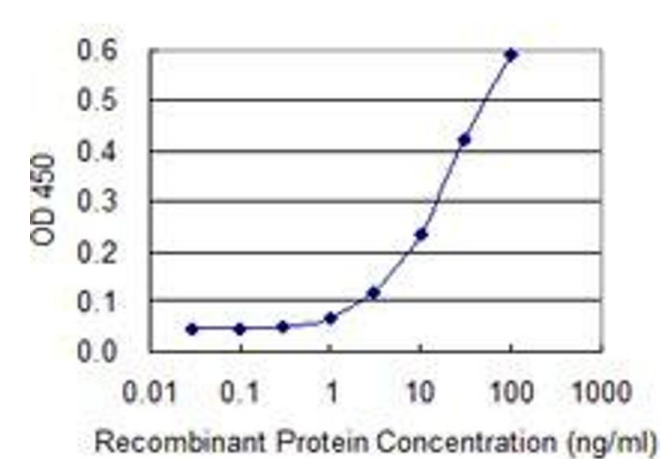
Application Details

Application Notes:	Optimal working dilution should be determined by the investigator.
Restrictions:	For Research Use only

Handling

Buffer:	In 1x PBS, pH 7.4
Handling Advice:	Aliquot to avoid repeated freezing and thawing.
Storage:	-20 °C
Storage Comment:	Store at -20°C or lower. Aliquot to avoid repeated freezing and thawing.

Images



ELISA

Image 1. Detection limit for recombinant GST tagged SERGEF is 1 ng/ml as a capture antibody.