



[Go to Product page](#)

Datasheet for ABIN565296

## anti-ELP4 antibody (AA 101-199)

### 2 Images

#### Overview

Quantity:	50 µL
Target:	ELP4
Binding Specificity:	AA 101-199
Reactivity:	Human
Host:	Mouse
Clonality:	Polyclonal
Conjugate:	This ELP4 antibody is un-conjugated
Application:	Western Blotting (WB), ELISA

#### Product Details

Purpose:	Mouse polyclonal antibody raised against a partial recombinant ELP4.
Immunogen:	ELP4 (NP_061913, 101 a.a. ~ 199 a.a) partial recombinant protein with GST tag.
Sequence:	YFLAEGIVNG HTLLVASAKE DPANILQELP APLDDKCKK EFDEDVYNHK TPESNIKMKI AWRYQLLPKM EIGPVSSSRF GHYYDASKRM PQELIEASN
Cross-Reactivity:	Human
Characteristics:	Antibody Reactive Against Recombinant Protein.

#### Target Details

Target:	ELP4
Alternative Name:	ELP4 ( <a href="#">ELP4 Products</a> )

## Target Details

Background:	Full Gene Name: elongation protein 4 homolog ( <i>S. cerevisiae</i> ) Synonyms: C11orf19,FLJ20498,PAX6NEB,PAXNEB,dJ68P15A.1
Gene ID:	26610
NCBI Accession:	<a href="#">NM_019040</a>

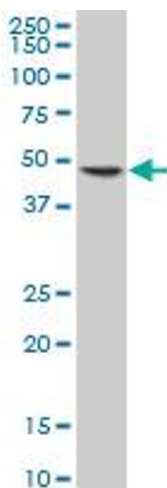
## Application Details

Application Notes:	Optimal working dilution should be determined by the investigator.
Restrictions:	For Research Use only

## Handling

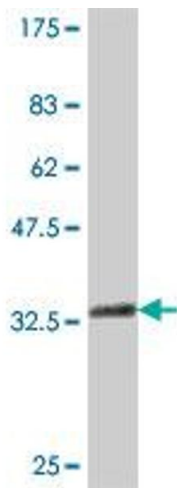
Format:	Liquid
Buffer:	50 % glycerol
Handling Advice:	Aliquot to avoid repeated freezing and thawing.
Storage:	-20 °C
Storage Comment:	Store at -20°C or lower. Aliquot to avoid repeated freezing and thawing.

## Images



### Western Blotting

**Image 1.** ELP4 polyclonal antibody (A01), Lot # 060623JCS1 Western Blot analysis of ELP4 expression in Y-79 .



### Western Blotting

**Image 2.** Western Blot detection against Immunogen (37 kDa).