



[Go to Product page](#)

Datasheet for ABIN565322
anti-DAPP1 antibody (AA 1-108)

1 Image

Overview

Quantity:	50 µL
Target:	DAPP1
Binding Specificity:	AA 1-108
Reactivity:	Human
Host:	Mouse
Clonality:	Polyclonal
Conjugate:	This DAPP1 antibody is un-conjugated
Application:	Western Blotting (WB), ELISA

Product Details

Purpose:	Mouse polyclonal antibody raised against a partial recombinant DAPP1.
Immunogen:	DAPP1 (NP_055210, 1 a.a. ~ 108 a.a) partial recombinant protein with GST tag.
Sequence:	MGRAELLEGK MSTQDPSDLW SRSDGEAELL QDLGWYHGNI TRHAAEALL SNGCDGSYLL RDSNETTGLY SLSVRAKDSV KHFHVEYTG YSFKFGFNEFS SLKDFVKH
Cross-Reactivity:	Human
Characteristics:	Antibody Reactive Against Recombinant Protein.

Target Details

Target:	DAPP1
Alternative Name:	DAPP1 (DAPP1 Products)

Target Details

Background:	Full Gene Name: dual adaptor of phosphotyrosine and 3-phosphoinositides Synonyms: BAM32,DKFZp667E0716
Gene ID:	27071
NCBI Accession:	NM_014395
Pathways:	BCR Signaling

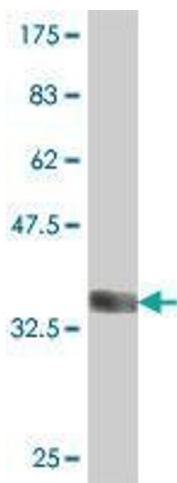
Application Details

Application Notes:	Optimal working dilution should be determined by the investigator.
Restrictions:	For Research Use only

Handling

Format:	Liquid
Buffer:	50 % glycerol
Handling Advice:	Aliquot to avoid repeated freezing and thawing.
Storage:	-20 °C
Storage Comment:	Store at -20°C or lower. Aliquot to avoid repeated freezing and thawing.

Images



Western Blotting

Image 1. Western Blot detection against Immunogen (37.99 kDa).