

Datasheet for ABIN565335
anti-AFF4 antibody (AA 1-108)[Go to Product page](#)

4 Images

Overview

| | |
|----------------------|---|
| Quantity: | 100 µg |
| Target: | AFF4 |
| Binding Specificity: | AA 1-108 |
| Reactivity: | Human |
| Host: | Mouse |
| Clonality: | Monoclonal |
| Conjugate: | This AFF4 antibody is un-conjugated |
| Application: | Western Blotting (WB), ELISA, Immunohistochemistry (Paraffin-embedded Sections) (IHC (p)) |

Product Details

| | |
|-------------------|---|
| Purpose: | Mouse monoclonal antibody raised against a partial recombinant AFF4. |
| Immunogen: | AFF4 (NP_055238, 1 a.a. ~ 108 a.a) partial recombinant protein with GST tag. MW of the GST tag alone is 26 KDa. |
| Sequence: | MNREDRNVLR MKERERRNQE IQQGEDAFPP SSPLFAEPYK VTSKEDKLSS RIQSMLGNYD EMKDFIGDRS IPKLVAIPKP TVPPSADEKS NPNFFEQRHG GSHQSSKW |
| Clone: | 2E12 |
| Isotype: | IgG1 |
| Cross-Reactivity: | Human |
| Characteristics: | Antibody Reactive Against Recombinant Protein. |

Target Details

| | |
|-------------------|---|
| Target: | AFF4 |
| Alternative Name: | AFF4 (AFF4 Products) |
| Background: | Full Gene Name: AF4/FMR2 family, member 4 Synonyms: AF5Q31,MCEF,MGC75036 |
| Gene ID: | 27125 |
| NCBI Accession: | NM_014423 |

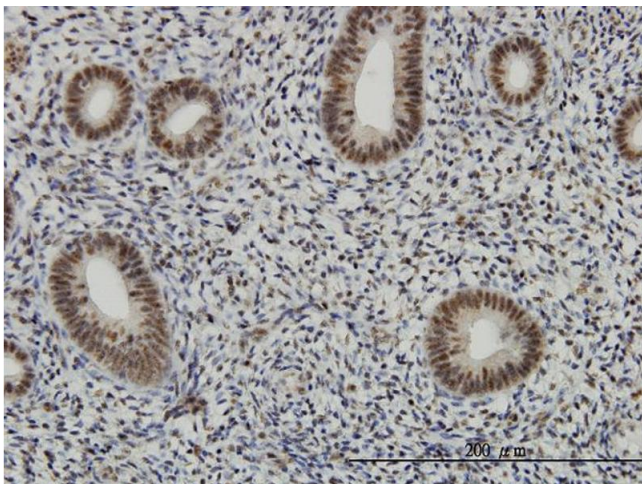
Application Details

| | |
|--------------------|--|
| Application Notes: | Optimal working dilution should be determined by the investigator. |
| Restrictions: | For Research Use only |

Handling

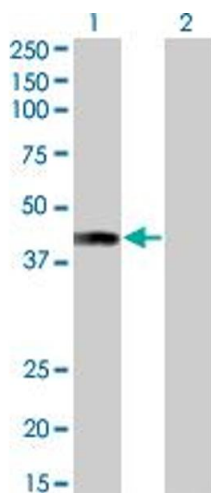
| | |
|------------------|--|
| Buffer: | In 1x PBS, pH 7.4 |
| Handling Advice: | Aliquot to avoid repeated freezing and thawing. |
| Storage: | -20 °C |
| Storage Comment: | Store at -20°C or lower. Aliquot to avoid repeated freezing and thawing. |

Images



Immunostaining

Image 1. Immunoperoxidase of monoclonal antibody to AFF4 on formalin-fixed paraffin-embedded human endometrium. [antibody concentration 1 ug/ml]

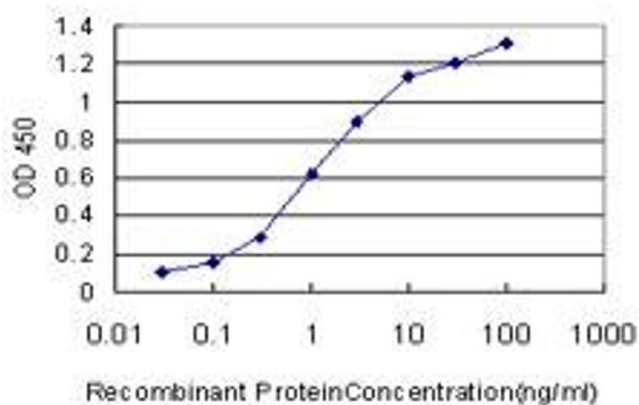


Western Blotting

Image 2. Western Blot analysis of AFF4 expression in transfected 293T cell line by AFF4 monoclonal antibody (M01), clone 2E12.

Lane 1: AFF4 transfected lysate(40.2 KDa).

Lane 2: Non-transfected lysate.



ELISA

Image 3. Detection limit for recombinant GST tagged AFF4 is approximately 0.03ng/ml as a capture antibody.

Please check the [product details page](#) for more images. Overall 4 images are available for ABIN565335.