



[Go to Product page](#)

Datasheet for ABIN565337

anti-SMC1B antibody (AA 551-660)

2 Images

Overview

Quantity:	100 µg
Target:	SMC1B
Binding Specificity:	AA 551-660
Reactivity:	Human
Host:	Mouse
Clonality:	Monoclonal
Conjugate:	This SMC1B antibody is un-conjugated
Application:	Western Blotting (WB), ELISA, Immunofluorescence (IF)

Product Details

Purpose:	Mouse monoclonal antibody raised against a partial recombinant SMC1L2.
Immunogen:	SMC1L2 (NP_683515, 551 a.a. ~ 660 a.a) partial recombinant protein with GST tag. MW of the GST tag alone is 26 KDa.
Sequence:	KVAKDCIRFL KEERAEPETF LALDYLDIKP INERLRELKG CKMVIDVIKT QFPQLKKVIQ FVCGNGLVCE TMEEARHIAL SGPERQKTVA LDGTLFLKSG VISGGSSDLK
Clone:	6A10
Isotype:	IgG1
Cross-Reactivity:	Human
Characteristics:	Antibody Reactive Against Recombinant Protein.

Target Details

Target:	SMC1B
Alternative Name:	SMC1B (SMC1B Products)
Background:	Full Gene Name: structural maintenance of chromosomes 1B Synonyms: FLJ43748,SMC1BETA,SMC1L2,bK268H5,bK268H5.5
Gene ID:	27127
NCBI Accession:	NM_148674

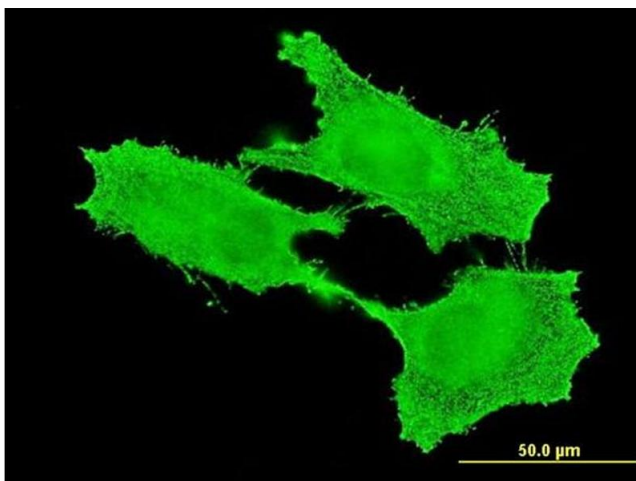
Application Details

Application Notes:	Optimal working dilution should be determined by the investigator.
Restrictions:	For Research Use only

Handling

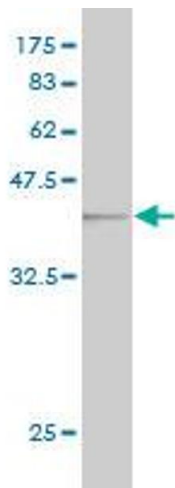
Buffer:	In 1x PBS, pH 7.4
Handling Advice:	Aliquot to avoid repeated freezing and thawing.
Storage:	-20 °C
Storage Comment:	Store at -20°C or lower. Aliquot to avoid repeated freezing and thawing.

Images



Immunofluorescence

Image 1. Immunofluorescence of monoclonal antibody to SMC1B on HeLa cell. [antibody concentration 10 ug/ml]



Western Blotting

Image 2. Western Blot detection against Immunogen (37.84 kDa).