



[Go to Product page](#)

Datasheet for ABIN565356

## anti-**SESN1** antibody (AA 271-370)

### 2 Images

#### Overview

Quantity:	50 µL
Target:	SESN1
Binding Specificity:	AA 271-370
Reactivity:	Human
Host:	Mouse
Clonality:	Polyclonal
Conjugate:	This SESN1 antibody is un-conjugated
Application:	Western Blotting (WB), ELISA

#### Product Details

Purpose:	Mouse polyclonal antibody raised against a partial recombinant SESN1.
Immunogen:	SESN1 (NM_014454, 271 a.a. ~ 370 a.a) partial recombinant protein with GST tag.
Sequence:	LASFTFGCGI SPEIHCDGGH TFRPPSVSNY CICDITNGNH SVDEMPVNSA ENVSVSDSFF EVEALMEKMR QLQECRDEEE ASQEEMASRF EIEKRESMFV
Cross-Reactivity:	Human
Characteristics:	Antibody Reactive Against Recombinant Protein.

#### Target Details

Target:	SESN1
Alternative Name:	SESN1 ( <a href="#">SESN1 Products</a> )

## Target Details

Background:	Full Gene Name: sestrin 1 Synonyms: MGC138241,MGC142129,PA26,RP11-787I22.1,SEST1
Gene ID:	27244
NCBI Accession:	<a href="#">NM_014454</a>

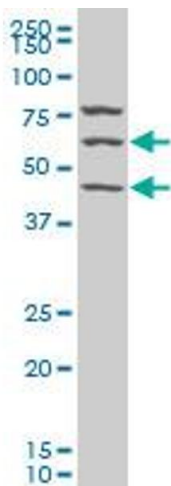
## Application Details

Application Notes:	Optimal working dilution should be determined by the investigator.
Restrictions:	For Research Use only

## Handling

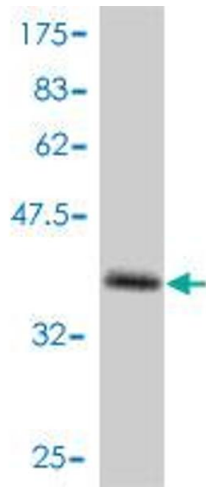
Format:	Liquid
Buffer:	50 % glycerol
Handling Advice:	Aliquot to avoid repeated freezing and thawing.
Storage:	-20 °C
Storage Comment:	Store at -20°C or lower. Aliquot to avoid repeated freezing and thawing.

## Images



### Western Blotting

**Image 1.** SESN1 polyclonal antibody (A01), Lot # ABNOVA060616QCS1 Western Blot analysis of SESN1 expression in HeLa S3 NE .



### Western Blotting

**Image 2.** Western Blot detection against Immunogen (37.11 kDa).