



[Go to Product page](#)

Datasheet for ABIN565375

anti-RPS6KA6 antibody (AA 636-745)

4 Images

Overview

Quantity:	100 µg
Target:	RPS6KA6
Binding Specificity:	AA 636-745
Reactivity:	Human
Host:	Mouse
Clonality:	Monoclonal
Conjugate:	This RPS6KA6 antibody is un-conjugated
Application:	ELISA, Western Blotting (WB), Immunohistochemistry (Paraffin-embedded Sections) (IHC (p))

Product Details

Purpose:	Mouse monoclonal antibody raised against a partial recombinant RPS6KA6.
Immunogen:	RPS6KA6 (NP_055311.1, 636 a.a. ~ 745 a.a) partial recombinant protein with GST tag. MW of the GST tag alone is 26 KDa.
Sequence:	RINGNGKFSLSGGNWDNISDGAKDLLSHMLHMDPHQRYTAEQILKHSWITHRDQLPNDQPK RNDVSHVVKGAMVATYSALTKHTFQPVLEPVAASSLAQRRSMKKRTSTGL
Clone:	8E8
Isotype:	IgG2a
Cross-Reactivity:	Human, Rat
Characteristics:	Antibody Reactive Against Recombinant Protein.

Target Details

Target:	RPS6KA6
Alternative Name:	RPS6KA6 (RPS6KA6 Products)
Background:	Full Gene Name: ribosomal protein S6 kinase, 90 kDa, polypeptide 6 Synonyms: RSK4
Gene ID:	27330
NCBI Accession:	NM_014496
Pathways:	MAPK Signaling

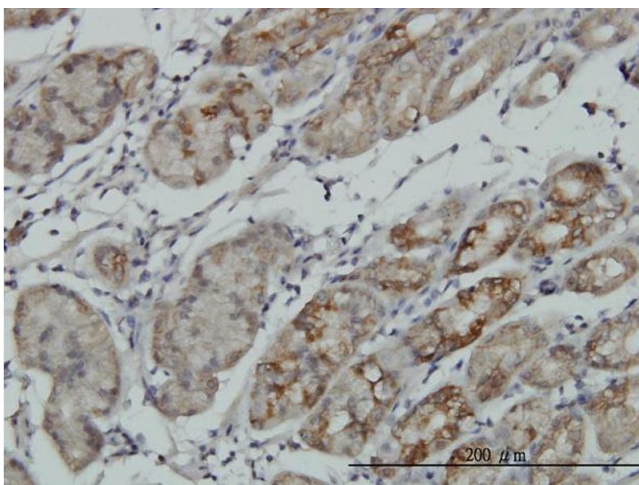
Application Details

Application Notes:	Optimal working dilution should be determined by the investigator.
Restrictions:	For Research Use only

Handling

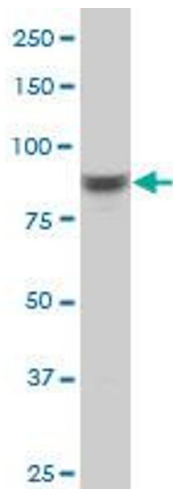
Buffer:	In 1x PBS, pH 7.4
Handling Advice:	Aliquot to avoid repeated freezing and thawing.
Storage:	-20 °C
Storage Comment:	Store at -20°C or lower. Aliquot to avoid repeated freezing and thawing.

Images



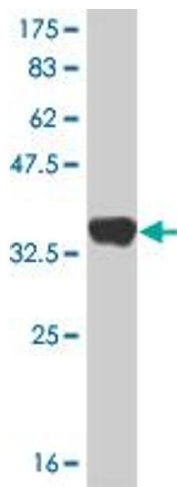
Immunostaining

Image 1. Immunoperoxidase of monoclonal antibody to RPS6KA6 on formalin-fixed paraffin-embedded human stomach. [antibody concentration 3 ug/ml]



Western Blotting

Image 2. RPS6KA6 monoclonal antibody (M04), clone 8E8 Western Blot analysis of RPS6KA6 expression in PC-12 .



Western Blotting

Image 3. Western Blot detection against Immunogen (37.84 kDa) .

Please check the [product details page](#) for more images. Overall 4 images are available for ABIN565375.