



[Go to Product page](#)

Datasheet for ABIN565390  
**anti-EML4 antibody (AA 1-62)**

2 Images

1 Publication

### Overview

Quantity:	100 µg
Target:	EML4
Binding Specificity:	AA 1-62
Reactivity:	Human
Host:	Mouse
Clonality:	Monoclonal
Conjugate:	This EML4 antibody is un-conjugated
Application:	ELISA, Western Blotting (WB), Immunohistochemistry (Paraffin-embedded Sections) (IHC (p))

### Product Details

Purpose:	Mouse monoclonal antibody raised against a full length recombinant EML4.
Immunogen:	EML4 (AAH08685, 1 a.a. ~ 62 a.a) full-length recombinant protein with GST tag. MW of the GST tag alone is 26 KDa.
Sequence:	MCYTPCKKYT DMNRQFLEKK EHFFKYLGNT ALSDQQGVYL RTSVTFGVAM YNEIYNHDTL RW
Clone:	3C10
Isotype:	IgG1
Cross-Reactivity:	Human
Characteristics:	Antibody Reactive Against Recombinant Protein.

## Target Details

---

Target:	EML4
Alternative Name:	EML4 ( <a href="#">EML4 Products</a> )
Background:	Full Gene Name: echinoderm microtubule associated protein like 4 Synonyms: C2orf2,DKFZp686P18118,ELP120,FLJ10942,FLJ32318,ROPP120
Gene ID:	27436

## Application Details

---

Application Notes:	Optimal working dilution should be determined by the investigator.
Restrictions:	For Research Use only

## Handling

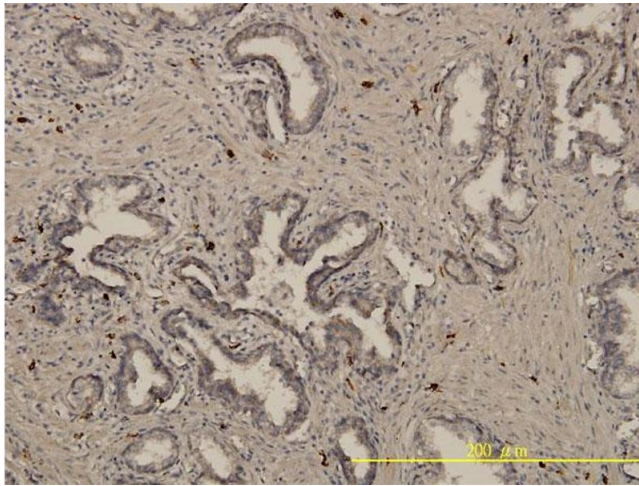
---

Buffer:	In 1x PBS, pH 7.4
Handling Advice:	Aliquot to avoid repeated freezing and thawing.
Storage:	-20 °C
Storage Comment:	Store at -20°C or lower. Aliquot to avoid repeated freezing and thawing.

## Publications

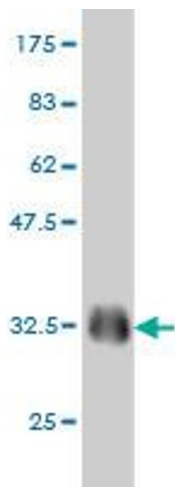
---

Product cited in:	Radtke, Rezaie, Kugler, Zabel, Schultz, Vollmer, Goldmann, Lang: "Expression analysis of EML4 in normal lung tissue and non-small cell lung cancer (NSCLC) in the absence and presence of chemotherapeutics." in: <b>Romanian journal of morphology and embryology = Revue roumaine de morphologie et embryologie</b> , Vol. 51, Issue 4, pp. 647-53, (2010) ( <a href="#">PubMed</a> ).
-------------------	--



### Immunostaining

**Image 1.** Immunoperoxidase of monoclonal antibody to EML4 on formalin-fixed paraffin-embedded human prostate cancer. [antibody concentration 10 ug/ml]



### Western Blotting

**Image 2.** Western Blot detection against Immunogen (32.56 KDa) .