



[Go to Product page](#)

Datasheet for ABIN565394
anti-DLL1 antibody (AA 18-109)

1 Image

Overview

Quantity:	50 µL
Target:	DLL1
Binding Specificity:	AA 18-109
Reactivity:	Human
Host:	Mouse
Clonality:	Polyclonal
Conjugate:	This DLL1 antibody is un-conjugated
Application:	Western Blotting (WB), ELISA

Product Details

Purpose:	Mouse polyclonal antibody raised against a partial recombinant DLL1.
Immunogen:	DLL1 (NP_005609, 18 a.a. ~ 109 a.a) partial recombinant protein with GST tag.
Sequence:	QVWSSGVFEL KLQEFVNKKG LLGNRNCCRG GAGPPPCACR TFFRVCLKHY QASVSPEPPC TYGSAVTPVL GVDSFSLPDG GGADSAFSNP IR
Cross-Reactivity:	Human
Characteristics:	Antibody Reactive Against Recombinant Protein.

Target Details

Target:	DLL1
Alternative Name:	DLL1 (DLL1 Products)

Target Details

Background: Full Gene Name: delta-like 1 (Drosophila)

Synonyms: DELTA1,DL1,Delta

Gene ID: 28514

NCBI Accession: [NM_005618](#)

Pathways: [Notch Signaling](#), [Stem Cell Maintenance](#)

Application Details

Application Notes: Optimal working dilution should be determined by the investigator.

Restrictions: For Research Use only

Handling

Format: Liquid

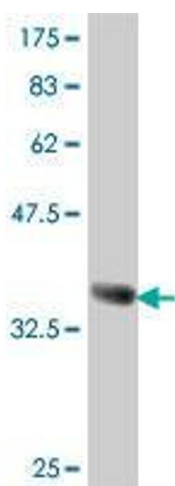
Buffer: 50 % glycerol

Handling Advice: Aliquot to avoid repeated freezing and thawing.

Storage: -20 °C

Storage Comment: Store at -20°C or lower. Aliquot to avoid repeated freezing and thawing.

Images



Western Blotting

Image 1. Western Blot detection against Immunogen (36.23 KDa) .