



[Go to Product page](#)

Datasheet for ABIN565412

anti-CLEC2D antibody (AA 1-154)

4 Images

6 Publications

Overview

Quantity:	100 µg
Target:	CLEC2D
Binding Specificity:	AA 1-154
Reactivity:	Human
Host:	Mouse
Clonality:	Monoclonal
Conjugate:	This CLEC2D antibody is un-conjugated
Application:	ELISA, Western Blotting (WB), Immunohistochemistry (Paraffin-embedded Sections) (IHC (p))

Product Details

Purpose:	Mouse monoclonal antibody raised against a full length recombinant CLEC2D.
Immunogen:	CLEC2D (AAH19883, 1 a.a. ~ 154 a.a) full-length recombinant protein with GST tag. MW of the GST tag alone is 26 KDa.
Sequence:	MHDSNNVEKD ITPSELPANP GCVHSKEHSI KATLIWRLFF LIMFLTIIVC GMVAALSAIR ANCHQEPSVC LQAACPESWI GFQRKCFYFS DDTKNWTSSQ RFCDSQDADL AQVESFQELN FLLRYKGPSD HWIGLSREQG QPWKWINGTE WTRQ
Clone:	4C7
Isotype:	IgG1
Cross-Reactivity:	Human
Characteristics:	Antibody Reactive Against Recombinant Protein.

Target Details

Target:	CLEC2D
Alternative Name:	CLEC2D (CLEC2D Products)
Background:	Full Gene Name: C-type lectin domain family 2, member D Synonyms: CLAX,LLT1,OCIL
Gene ID:	29121
Pathways:	Regulation of Leukocyte Mediated Immunity

Application Details

Application Notes:	Optimal working dilution should be determined by the investigator.
Restrictions:	For Research Use only

Handling

Buffer:	In 1x PBS, pH 7.4
Handling Advice:	Aliquot to avoid repeated freezing and thawing.
Storage:	-20 °C
Storage Comment:	Store at -20°C or lower. Aliquot to avoid repeated freezing and thawing.

Publications

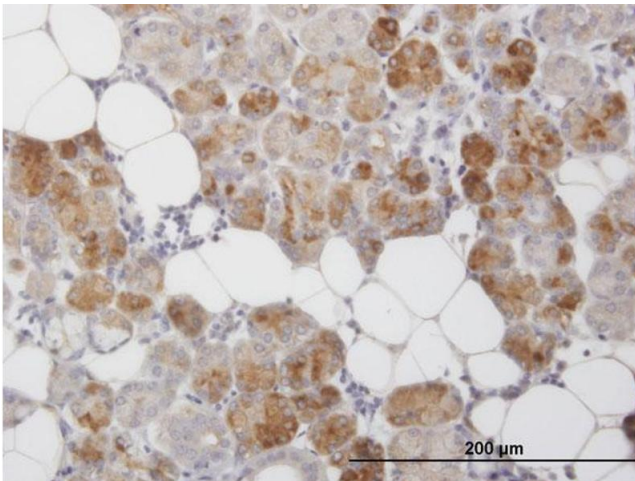
Product cited in:	<p>Williams, Eaton, Jones, Rengan, Burshtyn: "Vaccinia virus Western Reserve induces rapid surface expression of a host molecule detected by the antibody 4C7 that is distinct from CLEC2D." in: Microbiology and immunology, Vol. 60, Issue 11, pp. 754-769, (2016) (PubMed).</p> <p>Chalan, Bijzet, Huitema, Kroesen, Brouwer, Boots: "Expression of Lectin-Like Transcript 1, the Ligand for CD161, in Rheumatoid Arthritis." in: PLoS ONE, Vol. 10, Issue 7, pp. e0132436, (2015) (PubMed).</p> <p>Germain, Meier, Jensen, Knapnougel, Poupon, Lazzari, Neisig, Håkansson, Dong, Wagtmann, Galsgaard, Spee, Braud: "Induction of lectin-like transcript 1 (LLT1) protein cell surface expression by pathogens and interferon-? contributes to modulate immune responses." in: The Journal of biological chemistry, Vol. 286, Issue 44, pp. 37964-75, (2011) (PubMed).</p> <p>Germain, Bihl, Zahn, Poupon, Dumaurier, Rampanarivo, Padkjær, Spee, Braud: "Characterization</p>
-------------------	--

of alternatively spliced transcript variants of CLEC2D gene." in: **The Journal of biological chemistry**, Vol. 285, Issue 46, pp. 36207-15, (2010) ([PubMed](#)).

Rosen, Cao, Avery, Tangye, Liu, Houchins, Lanier: "Functional consequences of interactions between human NKR-P1A and its ligand LLT1 expressed on activated dendritic cells and B cells." in: **Journal of immunology (Baltimore, Md. : 1950)**, Vol. 180, Issue 10, pp. 6508-17, (2008) ([PubMed](#)).

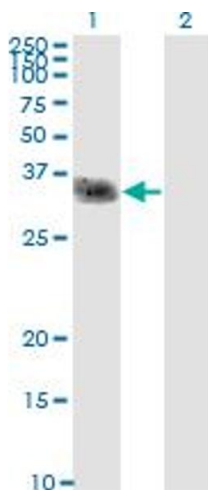
There are more publications referencing this product on: [Product page](#)

Images



Immunostaining

Image 1. Immunoperoxidase of monoclonal antibody to CLEC2D on formalin-fixed paraffin-embedded human salivary gland. [antibody concentration 3 ug/ml]

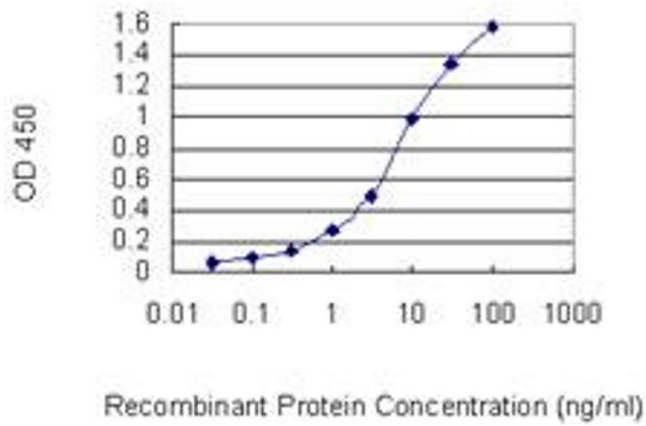


Western Blotting

Image 2. Western Blot analysis of CLEC2D expression in transfected 293T cell line by CLEC2D monoclonal antibody (M01), clone 4C7.

Lane 1: CLEC2D transfected lysate(21.8 KDa).

Lane 2: Non-transfected lysate.



ELISA

Image 3. Detection limit for recombinant GST tagged CLEC2D is 0.1 ng/ml as a capture antibody.

Please check the [product details page](#) for more images. Overall 4 images are available for ABIN565412.