

Datasheet for ABIN565428
anti-C12ORF24 antibody (AA 1-273)



[Go to Product page](#)

3 Images

Overview

Quantity:	100 µg
Target:	C12ORF24 (C12orf24)
Binding Specificity:	AA 1-273
Reactivity:	Human
Host:	Mouse
Clonality:	Monoclonal
Conjugate:	This C12ORF24 antibody is un-conjugated
Application:	Western Blotting (WB), ELISA, Immunoprecipitation (IP)

Product Details

Purpose:	Mouse monoclonal antibody raised against a full-length recombinant C12orf24.
Immunogen:	C12orf24 (AAH20967, 1 a.a. ~ 273 a.a) full-length recombinant protein with GST tag. MW of the GST tag alone is 26 KDa.
Sequence:	MLGQLLPHTA RGLGAAEMPG QGPGSDWTER SSSAEPPIVA GTEGGGGGSA GYSCYQNSKG SDRIKDGYSV NSHIAKLQEL WKTPQNQTIH LSKSMMEASF FKHPDLTTGQ KRYLCSIAKI YNANYLKMLM KRQYMHVLQH SSQKPGVLTH HRSRLSSRYS QKQHYPCTTW RHQLEREDSG SSDIAAASAP EMLIQHSLWR PVRNKEGIKT GYASKTRCKS LKIFRRPRKL FMQTVSSDDS ESHMSEEKKE EDLLNNFMQS MSIEEQGEHL MLT
Clone:	2G4-1A1
Isotype:	IgG1
Cross-Reactivity:	Human

Product Details

Characteristics: Antibody Reactive Against Recombinant Protein.

Target Details

Target: C12ORF24 (C12orf24)

Alternative Name: C12orf24 ([C12orf24 Products](#))

Background: Full Gene Name: chromosome 12 open reading frame 24
Synonyms: HSU79274

Gene ID: 29902

Application Details

Application Notes: Optimal working dilution should be determined by the investigator.

Restrictions: For Research Use only

Handling

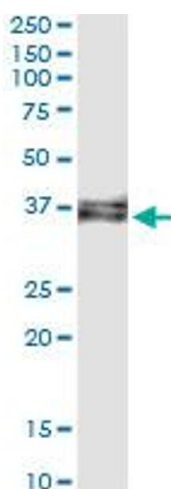
Buffer: In 1x PBS, pH 7.4

Handling Advice: Aliquot to avoid repeated freezing and thawing.

Storage: -20 °C

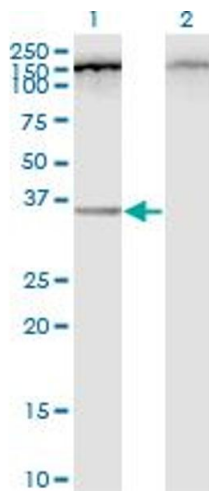
Storage Comment: Store at -20°C or lower. Aliquot to avoid repeated freezing and thawing.

Images



Immunoprecipitation

Image 1. Immunoprecipitation of C12orf24 transfected lysate using anti-C12orf24 monoclonal antibody and Protein A Magnetic Bead, and immunoblotted with C12orf24 MaxPab rabbit polyclonal antibody.

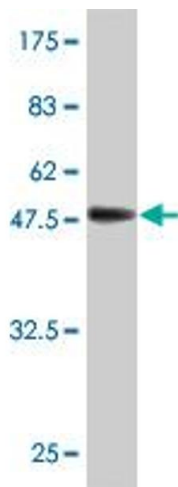


Western Blotting

Image 2. Western Blot analysis of C12orf24 expression in transfected 293T cell line by C12orf24 monoclonal antibody (M01), clone 2G4-1A1.

Lane 1: C12orf24 transfected lysate (Predicted MW: 30.8 KDa).

Lane 2: Non-transfected lysate.



Western Blotting

Image 3. Western Blot detection against Immunogen (55.77 KDa).