



Datasheet for ABIN565439
anti-DSE antibody (AA 574-673)



[Go to Product page](#)

3 Images

Overview

Quantity:	100 µg
Target:	DSE
Binding Specificity:	AA 574-673
Reactivity:	Human
Host:	Mouse
Clonality:	Monoclonal
Conjugate:	This DSE antibody is un-conjugated
Application:	ELISA, Western Blotting (WB)

Product Details

Purpose:	Mouse monoclonal antibody raised against a partial recombinant DSE.
Immunogen:	DSE (NP_037484, 574 a.a. ~ 673 a.a) partial recombinant protein with GST tag. MW of the GST tag alone is 26 KDa.
Sequence:	LGEESPLETA ASFFHNVDVP FEETVVDGVH GAFIRQRDGL YKMYWMDDTG YSEKATFASV TYPRGYPYNG TNYVNVMTMHL RSPITRAAYL FIGPSIDVQS
Clone:	6D4
Isotype:	IgG2a
Cross-Reactivity:	Human
Characteristics:	Antibody Reactive Against Recombinant Protein.

Target Details

Target:	DSE
Alternative Name:	DSE (DSE Products)
Background:	Full Gene Name: dermatan sulfate epimerase Synonyms: DSEPI,SART2
Gene ID:	29940
NCBI Accession:	NM_013352
Pathways:	Glycosaminoglycan Metabolic Process

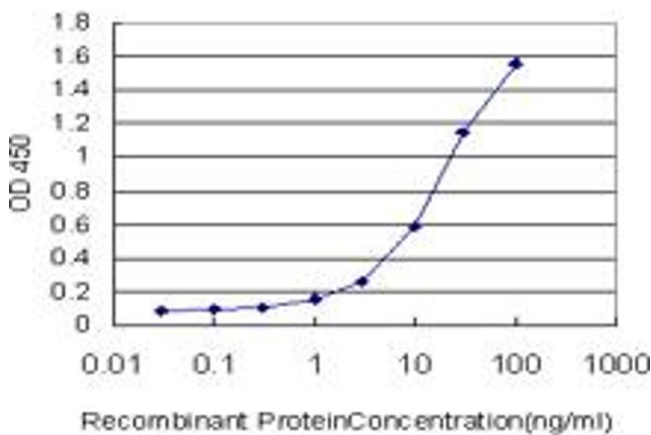
Application Details

Application Notes:	Optimal working dilution should be determined by the investigator.
Restrictions:	For Research Use only

Handling

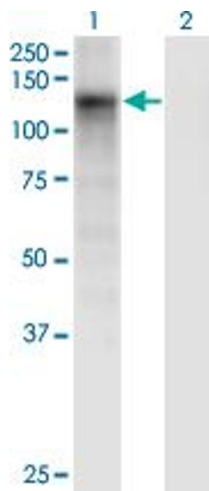
Buffer:	In 1x PBS, pH 7.4
Handling Advice:	Aliquot to avoid repeated freezing and thawing.
Storage:	-20 °C
Storage Comment:	Store at -20°C or lower. Aliquot to avoid repeated freezing and thawing.

Images



ELISA

Image 1. Detection limit for recombinant GST tagged DSE is approximately 0.3ng/ml as a capture antibody.

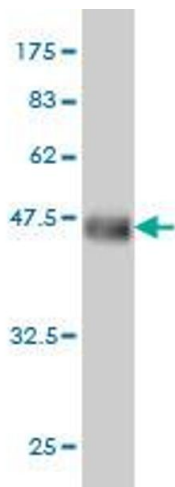


Western Blotting

Image 2. Western Blot analysis of DSE expression in transfected 293T cell line by DSE monoclonal antibody (M03), clone 6D4.

Lane 1: DSE transfected lysate (Predicted MW: 109.8 kDa).

Lane 2: Non-transfected lysate.



Western Blotting

Image 3. Western Blot detection against Immunogen (36.74 kDa).