



[Go to Product page](#)

Datasheet for ABIN565517  
**anti-PI15 antibody (AA 18-117)**

3 Images

Overview

Quantity:	100 µg
Target:	PI15
Binding Specificity:	AA 18-117
Reactivity:	Human
Host:	Mouse
Clonality:	Monoclonal
Conjugate:	This PI15 antibody is un-conjugated
Application:	Western Blotting (WB), ELISA, Immunohistochemistry (Paraffin-embedded Sections) (IHC (p))

Product Details

Purpose:	Mouse monoclonal antibody raised against a partial recombinant PI15.
Immunogen:	PI15 (NP_056970, 18 a.a. ~ 117 a.a) partial recombinant protein with GST tag. MW of the GST tag alone is 26 KDa.
Sequence:	EASTVLLNS TDSSPTNNF TDIEAALKAQ LDSADIPKAR RKRYISQNDM IALDYHNQV RGKVFPPAAN MEYMWVDENL AKSAEAWAAT CIWDHGPSYL
Clone:	3B5
Isotype:	IgG1
Cross-Reactivity:	Human
Characteristics:	Antibody Reactive Against Recombinant Protein.

## Target Details

Target:	PI15
Alternative Name:	PI15 ( <a href="#">PI15 Products</a> )
Background:	Full Gene Name: peptidase inhibitor 15 Synonyms: CRISP8,DKFZp686F0366,P24TI,P25TI
Gene ID:	51050
NCBI Accession:	<a href="#">NM_015886</a>

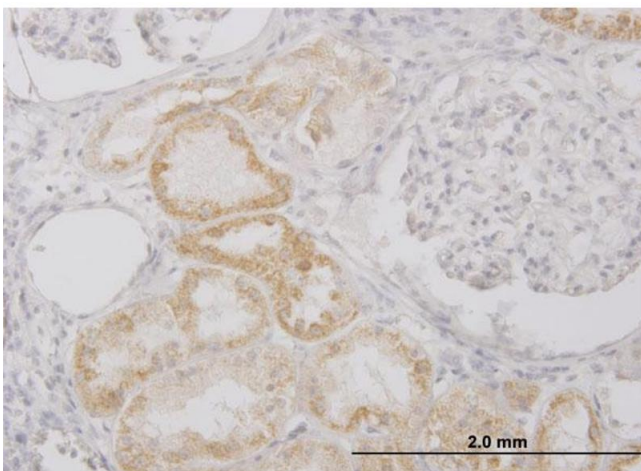
## Application Details

Application Notes:	Optimal working dilution should be determined by the investigator.
Restrictions:	For Research Use only

## Handling

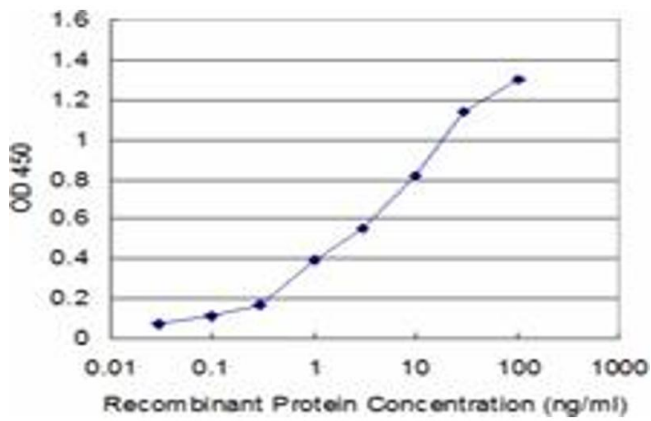
Buffer:	In 1x PBS, pH 7.4
Handling Advice:	Aliquot to avoid repeated freezing and thawing.
Storage:	-20 °C
Storage Comment:	Store at -20°C or lower. Aliquot to avoid repeated freezing and thawing.

## Images



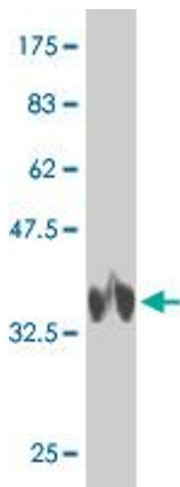
### Immunostaining

**Image 1.** Immunoperoxidase of monoclonal antibody to PI15 on formalin-fixed paraffin-embedded human kidney. [antibody concentration 3 ug/ml]



### ELISA

**Image 2.** Detection limit for recombinant GST tagged PI15 is approximately 0.1 ng/ml as a capture antibody.



### Western Blotting

**Image 3.** Western Blot detection against Immunogen (36.74 kDa).