



Datasheet for ABIN565519
anti-LAP3 antibody (AA 420-519)



[Go to Product page](#)

3 Images

1 Publication

Overview

Quantity:	50 µL
Target:	LAP3
Binding Specificity:	AA 420-519
Reactivity:	Human
Host:	Mouse
Clonality:	Polyclonal
Conjugate:	This LAP3 antibody is un-conjugated
Application:	Western Blotting (WB), ELISA

Product Details

Purpose:	Mouse polyclonal antibody raised against a partial recombinant LAP3.
Immunogen:	LAP3 (NP_056991, 420 a.a. ~ 519 a.a) partial recombinant protein with GST tag.
Sequence:	EASIETGDRV WRMPLFEHYT RQVVDCLAD VNNIGKYRSA GACTAAFLK EFVTHPKWAH LDIAGVMTNK DEVPYLRKGM TGRPTRTLIE FLLRFSQDNA
Cross-Reactivity:	Human
Characteristics:	Antibody Reactive Against Recombinant Protein.

Target Details

Target:	LAP3
Alternative Name:	LAP3 (LAP3 Products)

Target Details

Background: Full Gene Name: leucine aminopeptidase 3
Synonyms: LAP,LAPEP,PEPS

Gene ID: 51056

NCBI Accession: [NM_015907](#)

Application Details

Application Notes: Optimal working dilution should be determined by the investigator.

Restrictions: For Research Use only

Handling

Format: Liquid

Buffer: 50 % glycerol

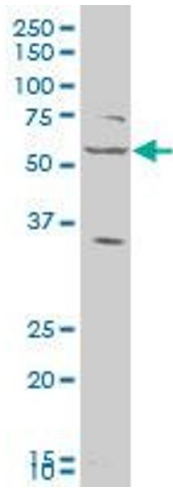
Handling Advice: Aliquot to avoid repeated freezing and thawing.

Storage: -20 °C

Storage Comment: Store at -20°C or lower. Aliquot to avoid repeated freezing and thawing.

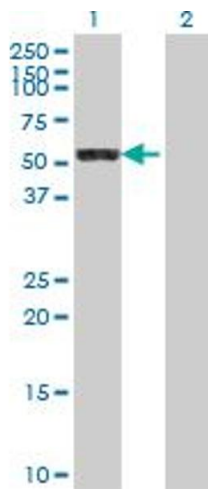
Publications

Product cited in: Kim, Kwak, Ahn: "Cytosolic aminopeptidases influence MHC class I-mediated antigen presentation in an allele-dependent manner." in: **Journal of immunology (Baltimore, Md. : 1950)**, Vol. 183, Issue 11, pp. 7379-87, (2009) ([PubMed](#)).



Western Blotting

Image 1. LAP3 polyclonal antibody (A01), Lot # FHC4060725QCS1 Western Blot analysis of LAP3 expression in HeLa .

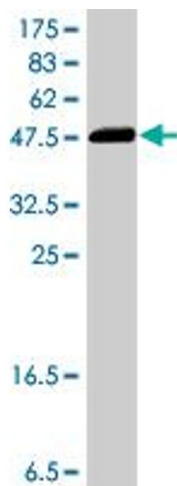


Western Blotting

Image 2. Western Blot analysis of LAP3 expression in transfected 293T cell line by LAP3 polyclonal antibody (A01).

Lane1:LAP3 transfected lysate(56.166 KDa).

Lane2:Non-transfected lysate.



Western Blotting

Image 3. Western Blot detection against Immunogen (37.11 KDa) .