

Datasheet for ABIN565521  
**anti-ATL1 antibody (AA 1-100)**



[Go to Product page](#)

4 Images

## Overview

Quantity:	100 µg
Target:	ATL1
Binding Specificity:	AA 1-100
Reactivity:	Human
Host:	Mouse
Clonality:	Monoclonal
Conjugate:	This ATL1 antibody is un-conjugated
Application:	Western Blotting (WB), ELISA

## Product Details

Purpose:	Mouse monoclonal antibody raised against a partial recombinant SPG3A.
Immunogen:	SPG3A (NP_056999, 1 a.a. ~ 100 a.a) partial recombinant protein with GST tag. MW of the GST tag alone is 26 KDa.
Sequence:	MAKNRRDRNS WGGFSEKTYE WSSEEEEPVK KAGPVQVLIV KDDHSFELDE TALNRILLSE AVRDKEVVAV SVAGAFRKGK SFLMDFMLRY MYNQESVDWV
Clone:	1B9
Isotype:	IgG1
Cross-Reactivity:	Human, Rat
Characteristics:	Antibody Reactive Against Recombinant Protein.

## Target Details

Target:	ATL1
Alternative Name:	ATL1 ( <a href="#">ATL1 Products</a> )
Background:	Full Gene Name: atlastin GTPase 1 Synonyms: AD-FSP,FSP1,GBP3,SPG3,SPG3A,atlastin1
Gene ID:	51062
NCBI Accession:	<a href="#">NM_015915</a>

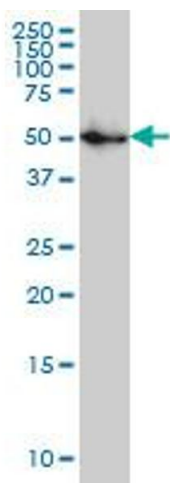
## Application Details

Application Notes:	Optimal working dilution should be determined by the investigator.
Restrictions:	For Research Use only

## Handling

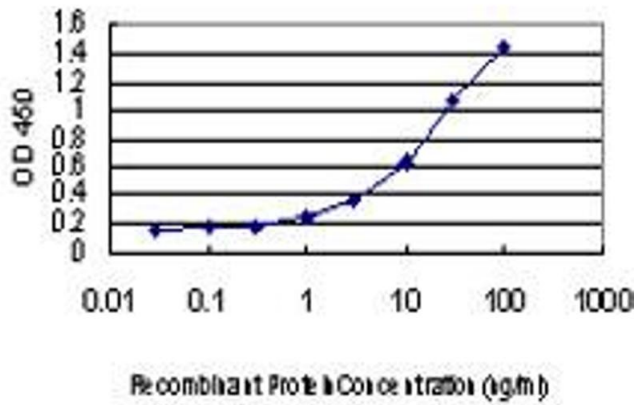
Buffer:	In 1x PBS, pH 7.4
Handling Advice:	Aliquot to avoid repeated freezing and thawing.
Storage:	-20 °C
Storage Comment:	Store at -20°C or lower. Aliquot to avoid repeated freezing and thawing.

## Images



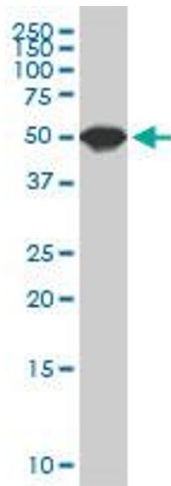
### Western Blotting

**Image 1.** SPG3A monoclonal antibody (M03), clone 1B9  
Western Blot analysis of SPG3A expression in IMR-32 .



### ELISA

**Image 2.** Detection limit for recombinant GST tagged SPG3A is approximately 1ng/ml as a capture antibody.



### Western Blotting

**Image 3.** SPG3A monoclonal antibody (M03), clone 1B9. Western Blot analysis of SPG3A expression in PC-12 .

Please check the [product details page](#) for more images. Overall 4 images are available for ABIN565521.