

Datasheet for ABIN565543  
**anti-SLC45A2 antibody (AA 1-243)**

3 Images

1 Publication

[Go to Product page](#)

## Overview

Quantity:	100 µg
Target:	SLC45A2
Binding Specificity:	AA 1-243
Reactivity:	Human
Host:	Mouse
Clonality:	Monoclonal
Conjugate:	This SLC45A2 antibody is un-conjugated
Application:	Western Blotting (WB), ELISA

## Product Details

Purpose:	Mouse monoclonal antibody raised against a full length recombinant SLC45A2.
Immunogen:	SLC45A2 (AAH03597, 1 a.a. ~ 243 a.a) full-length recombinant protein with GST tag. MW of the GST tag alone is 26 KDa.
Sequence:	MGSNSGQAGR HIYKSLADDG PFDSVEPPKR PTSRLIMHSM AMFGREFCYA VEAAYVTPVL LSVGLPSSLY SIVWFLSPIL GLLQPVVGS ASDHCRSRWG RRRPYILTLG VMMLVGMALY LNGATVVAAL IANPRRKLWV AISVTMIGVV LFDFAADFID GPIKAYLFDV CSHQDKEKGL HYHALFTDSQ GNDIKVTAES TGEHASSLPL PLHQPPHWMD GLPVQHAVLH RFHGPDCVPR GSL
Clone:	2F4
Isotype:	IgG2b
Cross-Reactivity:	Human

## Product Details

---

Characteristics: Antibody Reactive Against Recombinant Protein.

## Target Details

---

Target: SLC45A2

Alternative Name: SLC45A2 ([SLC45A2 Products](#))

Background: Full Gene Name: solute carrier family 45, member 2  
Synonyms: 1A1,AIM1,MATP,SHEP5

Gene ID: 51151

## Application Details

---

Application Notes: Optimal working dilution should be determined by the investigator.

Restrictions: For Research Use only

## Handling

---

Buffer: In 1x PBS, pH 7.4

Handling Advice: Aliquot to avoid repeated freezing and thawing.

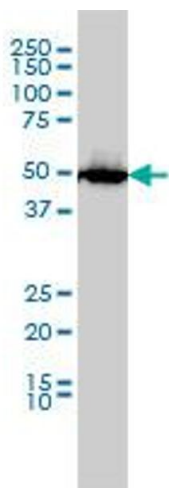
Storage: -20 °C

Storage Comment: Store at -20°C or lower. Aliquot to avoid repeated freezing and thawing.

## Publications

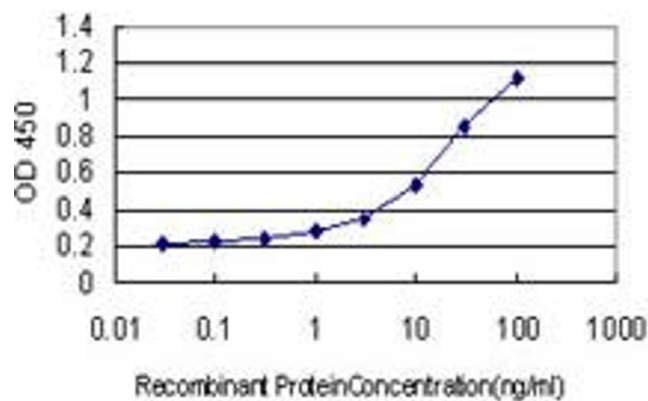
---

Product cited in: Bin, Bhin, Yang, Shin, Nam, Choi, Shin, Lee, Hwang, Cho, Lee: "Membrane-Associated Transporter Protein (MATP) Regulates Melanosomal pH and Influences Tyrosinase Activity." in: **PLoS ONE**, Vol. 10, Issue 6, pp. e0129273, (2015) ([PubMed](#)).



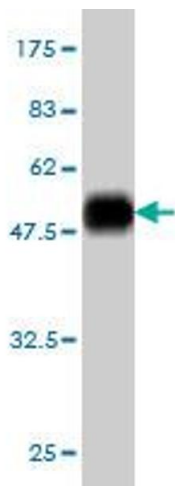
#### Western Blotting

**Image 1.** MATP monoclonal antibody (M01), clone 2F4  
Western Blot analysis of MATP expression in HL-60 .



#### ELISA

**Image 2.** Detection limit for recombinant GST tagged  
SLC45A2 is approximately 0.1 ng/ml as a capture antibody.



#### Western Blotting

**Image 3.** Western Blot detection against Immunogen (52.47  
kDa) .