

Datasheet for ABIN565544
anti-SLC45A2 antibody (AA 1-243)

2 Images

[Go to Product page](#)

Overview

Quantity:	100 µg
Target:	SLC45A2
Binding Specificity:	AA 1-243
Reactivity:	Human
Host:	Mouse
Clonality:	Monoclonal
Conjugate:	This SLC45A2 antibody is un-conjugated
Application:	Western Blotting (WB), ELISA

Product Details

Purpose:	Mouse monoclonal antibody raised against a full length recombinant SLC45A2.
Immunogen:	SLC45A2 (AAH03597, 1 a.a. ~ 243 a.a) full-length recombinant protein with GST tag. MW of the GST tag alone is 26 KDa.
Sequence:	MGSNSGQAGR HIYKSLADDG PFDSVEPPKR PTSRLIMHSM AMFGREFCYA VEAAYVTPVL LSVGLPSSLY SIVWFLSPIL GLLQPVVGS ASDHCRSRWG RRRPYILTLG VMMLVGMALY LNGATVVAAL IANPRRLVW AISVTMIGVV LFDFAADFID GPIKAYLFDV CSHQDKEKGL HYHALFTDSQ GNDIKVTAES TGEHASSLPL PLHQPPHWMD GLPVQHAVLH RFHGPDCVPR GSL
Clone:	1B2
Isotype:	IgG2a
Cross-Reactivity:	Human

Product Details

Characteristics: Antibody Reactive Against Recombinant Protein.

Target Details

Target:	SLC45A2
Alternative Name:	SLC45A2 (SLC45A2 Products)
Background:	Full Gene Name: solute carrier family 45, member 2 Synonyms: 1A1,AIM1,MATP,SHEP5
Gene ID:	51151

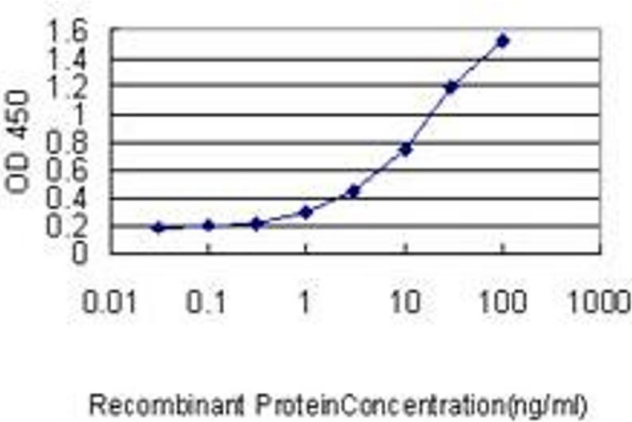
Application Details

Application Notes:	Optimal working dilution should be determined by the investigator.
Restrictions:	For Research Use only

Handling

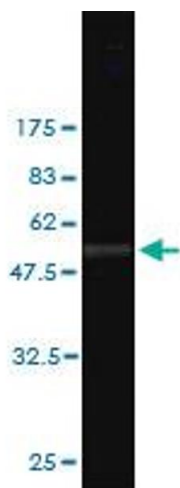
Buffer:	In 1x PBS, pH 7.4
Handling Advice:	Aliquot to avoid repeated freezing and thawing.
Storage:	-20 °C
Storage Comment:	Store at -20°C or lower. Aliquot to avoid repeated freezing and thawing.

Images



ELISA

Image 1. Detection limit for recombinant GST tagged SLC45A2 is approximately 0.03ng/ml as a capture antibody.



Western Blotting

Image 2. Western Blot detection against Immunogen (52.47 kDa) .