

Datasheet for ABIN565576
anti-GOLM1 antibody (AA 302-401)



[Go to Product page](#)

1 Image

Overview

Quantity:	50 µL
Target:	GOLM1
Binding Specificity:	AA 302-401
Reactivity:	Human
Host:	Mouse
Clonality:	Polyclonal
Conjugate:	This GOLM1 antibody is un-conjugated
Application:	Western Blotting (WB), ELISA

Product Details

Purpose:	Mouse polyclonal antibody raised against a partial recombinant GOLM1.
Immunogen:	GOLM1 (NP_057632, 302 a.a. ~ 401 a.a) partial recombinant protein with GST tag.
Sequence:	VQAALSVSQE NPEMEGPERD QLVIPDGQEE EQEAAGEGRN QKLRGEDDY NMDENEAESE TDKQAALAGN DRNIDVFNVE DQKRDTINLL DQREKRNHTL
Cross-Reactivity:	Human
Characteristics:	Antibody Reactive Against Recombinant Protein.

Target Details

Target:	GOLM1
Alternative Name:	GOLM1 (GOLM1 Products)

Target Details

Background:	Full Gene Name: golgi membrane protein 1 Synonyms: C9orf155,FLJ22634,FLJ23608,GOLPH2,GP73,PSEC0257,bA379P1.3
Gene ID:	51280
NCBI Accession:	NM_016548

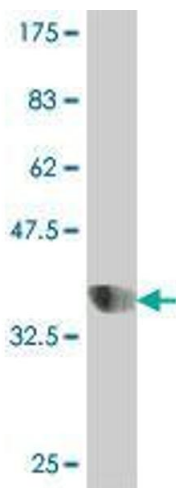
Application Details

Application Notes:	Optimal working dilution should be determined by the investigator.
Restrictions:	For Research Use only

Handling

Format:	Liquid
Buffer:	50 % glycerol
Handling Advice:	Aliquot to avoid repeated freezing and thawing.
Storage:	-20 °C
Storage Comment:	Store at -20°C or lower. Aliquot to avoid repeated freezing and thawing.

Images



Western Blotting

Image 1. Western Blot detection against Immunogen (37.11 kDa).