



[Go to Product page](#)

Datasheet for ABIN565584

anti-ARMCX1 antibody (AA 188-295)

3 Images

Overview

Quantity:	100 µg
Target:	ARMCX1
Binding Specificity:	AA 188-295
Reactivity:	Human
Host:	Mouse
Clonality:	Monoclonal
Conjugate:	This ARM CX1 antibody is un-conjugated
Application:	ELISA, Western Blotting (WB)

Product Details

Purpose:	Mouse monoclonal antibody raised against a partial recombinant ARM CX1.
Immunogen:	ARM CX1 (NP_057692, 188 a.a. ~ 295 a.a) partial recombinant protein with GST tag. MW of the GST tag alone is 26 KDa.
Sequence:	RRGKFNFPYK IDDILSAPDL QKVLNILERT NDPFIQEVAL VTLGNNAAYS FNQNAIRELG GVPIIAKLIK TKDPIIREKT YNALNNLSVN AENQGKIKTY ISQVCDT
Clone:	6E10
Isotype:	IgG3
Cross-Reactivity:	Human
Characteristics:	Antibody Reactive Against Recombinant Protein.

Target Details

Target:	ARMCX1
Alternative Name:	ARMCX1 (ARMCX1 Products)
Background:	Full Gene Name: armadillo repeat containing, X-linked 1 Synonyms: ALEX1,DKFZp686P06199
Gene ID:	51309
NCBI Accession:	NM_016608

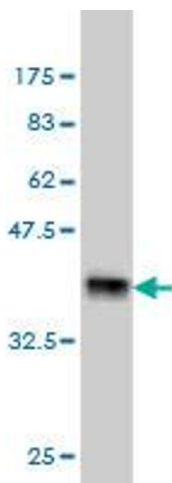
Application Details

Application Notes:	Optimal working dilution should be determined by the investigator.
Restrictions:	For Research Use only

Handling

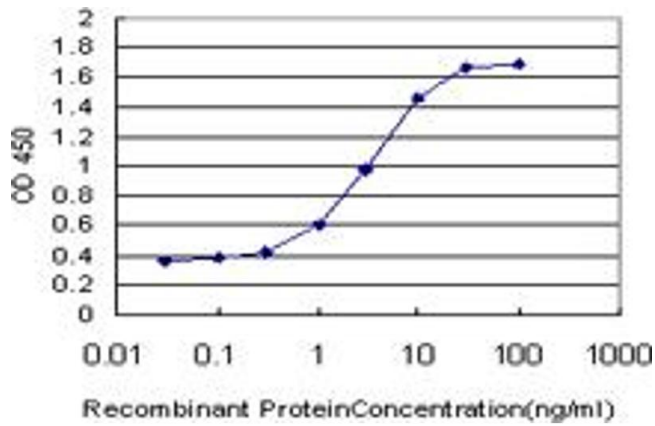
Buffer:	In 1x PBS, pH 7.4
Handling Advice:	Aliquot to avoid repeated freezing and thawing.
Storage:	-20 °C
Storage Comment:	Store at -20°C or lower. Aliquot to avoid repeated freezing and thawing.

Images



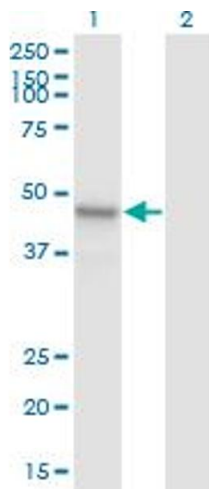
Western Blotting

Image 1. Western Blot detection against Immunogen (37.62 KDa) .



ELISA

Image 2. Detection limit for recombinant GST tagged ARM CX1 is approximately 0.03ng/ml as a capture antibody.



Western Blotting

Image 3. Western Blot analysis of ARM CX1 expression in transfected 293T cell line by ARM CX1 monoclonal antibody (M01), clone 6E10.

Lane 1: ARM CX1 transfected lysate (Predicted MW: 49.2 KDa).

Lane 2: Non-transfected lysate.