



Datasheet for ABIN565618

anti-G Protein-Coupled Receptor 89B (GPR89B) (AA 175-284) antibody



[Go to Product page](#)

1 Image

Overview

Quantity:	100 µg
Target:	G Protein-Coupled Receptor 89B (GPR89B)
Binding Specificity:	AA 175-284
Reactivity:	Human
Host:	Mouse
Clonality:	Monoclonal
Conjugate:	Un-conjugated
Application:	ELISA

Product Details

Purpose:	Mouse monoclonal antibody raised against a partial recombinant GPR89.
Immunogen:	GPR89 (AAH03187, 175 a.a. ~ 284 a.a) partial recombinant protein with GST tag. MW of the GST tag alone is 26 KDa.
Sequence:	SYFLRNVTDT DILALERRLL QTMDMIISKK KRMAMARRTM FQKGEVHNKP SGFWGMIKSV TTSASGSENL TLIQQEVDAL EELSRQLFLE TADLYATKER IEYSKTFK GK
Clone:	4D8
Isotype:	IgG2b
Cross-Reactivity:	Human
Characteristics:	Antibody Reactive Against Recombinant Protein.

Target Details

Target:	G Protein-Coupled Receptor 89B (GPR89B)
Alternative Name:	GPR89B (GPR89B Products)
Background:	Full Gene Name: G protein-coupled receptor 89B Synonyms: GPHR,GPR89,SH120
Gene ID:	51463

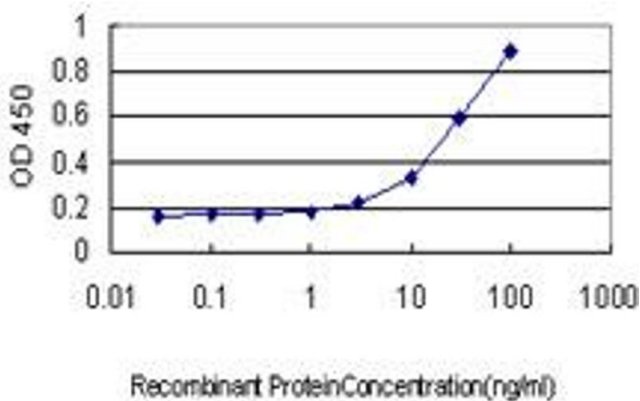
Application Details

Application Notes:	Optimal working dilution should be determined by the investigator.
Restrictions:	For Research Use only

Handling

Buffer:	In 1x PBS, pH 7.4
Handling Advice:	Aliquot to avoid repeated freezing and thawing.
Storage:	-20 °C
Storage Comment:	Store at -20°C or lower. Aliquot to avoid repeated freezing and thawing.

Images



ELISA

Image 1. Detection limit for recombinant GST tagged GPR89 is approximately 1 ng/ml as a capture antibody.