



Datasheet for ABIN565619  
**anti-UBE2J1 antibody (AA 9-118)**



[Go to Product page](#)

1 Image

## Overview

Quantity:	50 µL
Target:	UBE2J1
Binding Specificity:	AA 9-118
Reactivity:	Human
Host:	Mouse
Clonality:	Polyclonal
Conjugate:	This UBE2J1 antibody is un-conjugated
Application:	Western Blotting (WB), ELISA

## Product Details

Purpose:	Mouse polyclonal antibody raised against a partial recombinant UBE2J1.
Immunogen:	UBE2J1 (NP_003329, 9 a.a. ~ 118 a.a) partial recombinant protein with GST tag.
Sequence:	SPAVKRLMKE AAELKDPTDH YHAQPLEDNL FEWHFTVRGP PDSDFDGGVY HGRIVLPPEY PMKPPSIILL TANGRFEVGK KICLSISGHH PETWQPSWSI RTALLAIGF
Cross-Reactivity:	Human
Characteristics:	Antibody Reactive Against Recombinant Protein.

## Target Details

Target:	UBE2J1
Alternative Name:	UBE2J1 ( <a href="#">UBE2J1 Products</a> )

## Target Details

Background:	Full Gene Name: ubiquitin-conjugating enzyme E2, J1 (UBC6 homolog, yeast) Synonyms: CGI-76,HSPC153,HSPC205,HSU93243,MGC12555,NCUBE1,Ubc6p
Gene ID:	51465
NCBI Accession:	<a href="#">NM_016021</a>

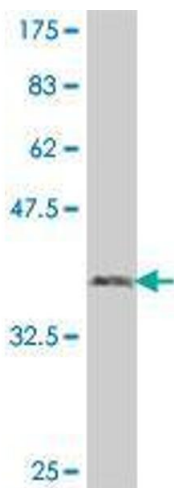
## Application Details

Application Notes:	Optimal working dilution should be determined by the investigator.
Restrictions:	For Research Use only

## Handling

Format:	Liquid
Buffer:	50 % glycerol
Handling Advice:	Aliquot to avoid repeated freezing and thawing.
Storage:	-20 °C
Storage Comment:	Store at -20°C or lower. Aliquot to avoid repeated freezing and thawing.

## Images



### Western Blotting

**Image 1.** Western Blot detection against Immunogen (38.21 kDa).