



[Go to Product page](#)

Datasheet for ABIN565620
anti-UBE2J1 antibody (AA 9-118)

3 Images

Overview

Quantity:	100 µg
Target:	UBE2J1
Binding Specificity:	AA 9-118
Reactivity:	Human
Host:	Mouse
Clonality:	Monoclonal
Conjugate:	This UBE2J1 antibody is un-conjugated
Application:	Western Blotting (WB), ELISA

Product Details

Purpose:	Mouse monoclonal antibody raised against a partial recombinant UBE2J1.
Immunogen:	UBE2J1 (NP_003329, 9 a.a. ~ 118 a.a) partial recombinant protein with GST tag. MW of the GST tag alone is 26 KDa.
Sequence:	SPAVKRLMKE AAELKDPTDH YHAQPLEDNL FEWHFTVRGP PDSDFDGGVY HGRIVLPPEY PMKPPSIILL TANGRFEVGK KICLSISGHH PETWQPSWSI RTALLAIIGF
Clone:	6A12
Isotype:	IgG2a
Cross-Reactivity:	Human
Characteristics:	Antibody Reactive Against Recombinant Protein.

Target Details

Target:	UBE2J1
Alternative Name:	UBE2J1 (UBE2J1 Products)
Background:	Full Gene Name: ubiquitin-conjugating enzyme E2, J1 (UBC6 homolog, yeast) Synonyms: CGI-76,HSPC153,HSPC205,HSU93243,MGC12555,NCUBE1,Ubc6p
Gene ID:	51465
NCBI Accession:	NM_016021

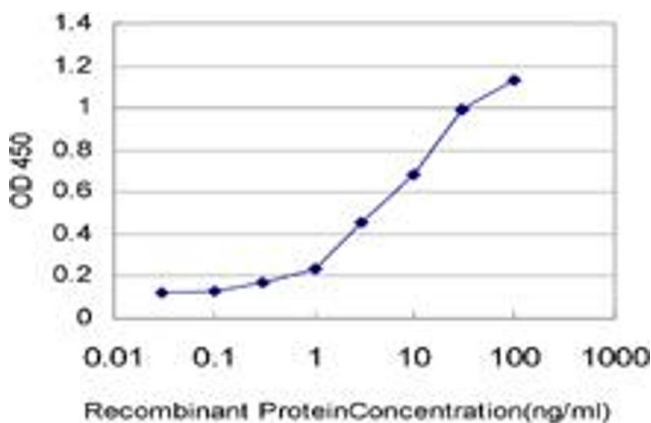
Application Details

Application Notes:	Optimal working dilution should be determined by the investigator.
Restrictions:	For Research Use only

Handling

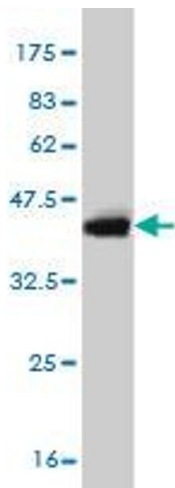
Buffer:	In 1x PBS, pH 7.4
Handling Advice:	Aliquot to avoid repeated freezing and thawing.
Storage:	-20 °C
Storage Comment:	Store at -20°C or lower. Aliquot to avoid repeated freezing and thawing.

Images



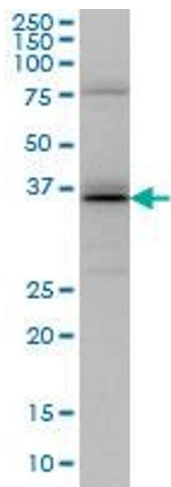
ELISA

Image 1. Detection limit for recombinant GST tagged UBE2J1 is approximately 0.1 ng/ml as a capture antibody.



Western Blotting

Image 2. Western Blot detection against Immunogen (37.84 KDa) .



Western Blotting

Image 3. UBE2J1 monoclonal antibody (M01), clone 6A12 Western Blot analysis of UBE2J1 expression in HeLa .