



[Go to Product page](#)

Datasheet for ABIN565622
anti-EVL antibody (AA 309-418)

4 Images

Overview

Quantity:	100 µg
Target:	EVL
Binding Specificity:	AA 309-418
Reactivity:	Human
Host:	Mouse
Clonality:	Monoclonal
Conjugate:	This EVL antibody is un-conjugated
Application:	Western Blotting (WB), ELISA, Immunofluorescence (IF)

Product Details

Purpose:	Mouse monoclonal antibody raised against a partial recombinant EVL.
Immunogen:	EVL (NP_057421, 309 a.a. ~ 418 a.a) partial recombinant protein with GST tag. MW of the GST tag alone is 26 KDa.
Sequence:	PGTRAASQPP NSSEAGRKPW ERSNSVEKPV SSILSRTPSV AKSPEAKSPL QSQPHSRMKP AGSVNDMALD AFDLDRMKQE ILEEVVRELH KVKEEIIDAI RQELSGISTT
Clone:	5G1
Isotype:	IgG2a
Cross-Reactivity:	Human
Characteristics:	Antibody Reactive Against Recombinant Protein.

Target Details

Target:	EVL
Alternative Name:	EVL (EVL Products)
Background:	Full Gene Name: Enah/Vasp-like Synonyms: RNB6
Gene ID:	51466
NCBI Accession:	NM_016337

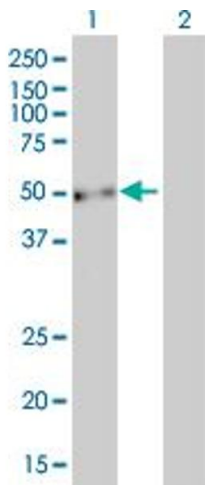
Application Details

Application Notes:	Optimal working dilution should be determined by the investigator.
Restrictions:	For Research Use only

Handling

Buffer:	In 1x PBS, pH 7.4
Handling Advice:	Aliquot to avoid repeated freezing and thawing.
Storage:	-20 °C
Storage Comment:	Store at -20°C or lower. Aliquot to avoid repeated freezing and thawing.

Images

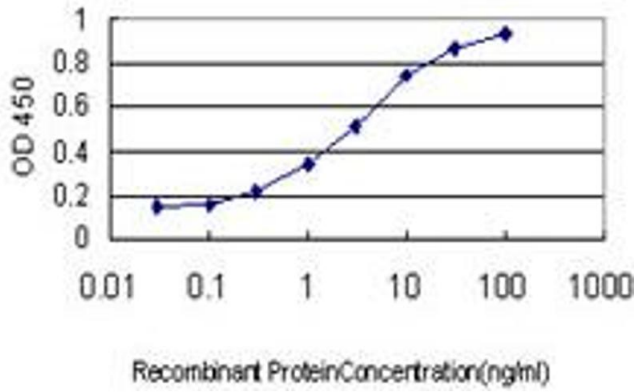


Western Blotting

Image 1. Western Blot analysis of EVL expression in transfected 293T cell line by EVL monoclonal antibody (M01), clone 5G1.

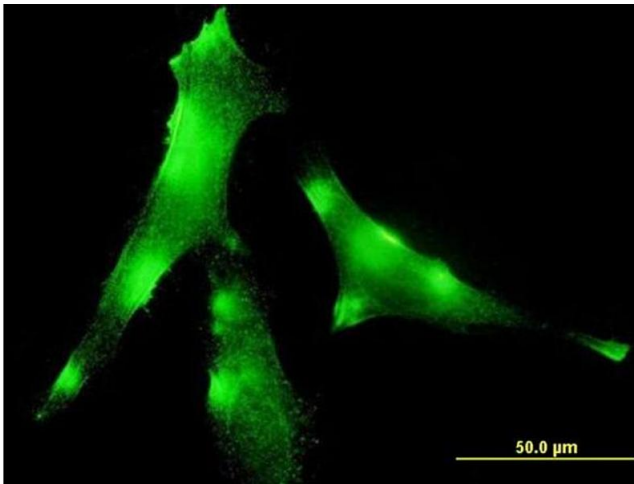
Lane 1: EVL transfected lysate(45 kDa).

Lane 2: Non-transfected lysate.



ELISA

Image 2. Detection limit for recombinant GST tagged EVL is approximately 0.03ng/ml as a capture antibody.



Immunofluorescence

Image 3. Immunofluorescence of monoclonal antibody to EVL on HeLa cell. [antibody concentration 10 ug/ml]

Please check the [product details page](#) for more images. Overall 4 images are available for ABIN565622.