

Datasheet for ABIN565630
anti-ANAPC11 antibody (AA 1-54)

3 Images

[Go to Product page](#)

Overview

| | |
|----------------------|--|
| Quantity: | 100 µg |
| Target: | ANAPC11 |
| Binding Specificity: | AA 1-54 |
| Reactivity: | Human |
| Host: | Mouse |
| Clonality: | Monoclonal |
| Conjugate: | This ANAPC11 antibody is un-conjugated |
| Application: | Western Blotting (WB), ELISA, Proximity Ligation Assay (PLA) |

Product Details

| | |
|-------------------|--|
| Purpose: | Mouse monoclonal antibody raised against a full length recombinant ANAPC11. |
| Immunogen: | ANAPC11 (AAH00607, 1 a.a. ~ 54 a.a) full-length recombinant protein with GST tag. MW of the GST tag alone is 26 KDa. |
| Sequence: | MGPGPVGKVP GDDCPLVWGQ CSHCFHMHCI LKWLHAQQVQ QHCPMCRQEW KFKE |
| Clone: | 1B4-1A4 |
| Isotype: | IgG1 |
| Cross-Reactivity: | Human |
| Characteristics: | Antibody Reactive Against Recombinant Protein. |

Target Details

| | |
|-------------------|--|
| Target: | ANAPC11 |
| Alternative Name: | ANAPC11 (ANAPC11 Products) |
| Background: | Full Gene Name: anaphase promoting complex subunit 11 Synonyms: APC11,Apc11p,HSPC214,MGC882 |
| Gene ID: | 51529 |

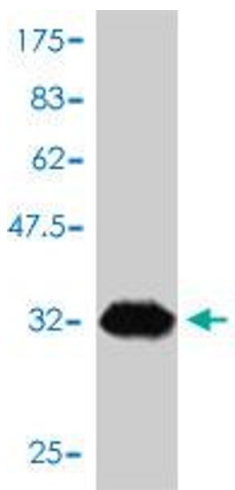
Application Details

| | |
|--------------------|--|
| Application Notes: | Optimal working dilution should be determined by the investigator. |
| Restrictions: | For Research Use only |

Handling

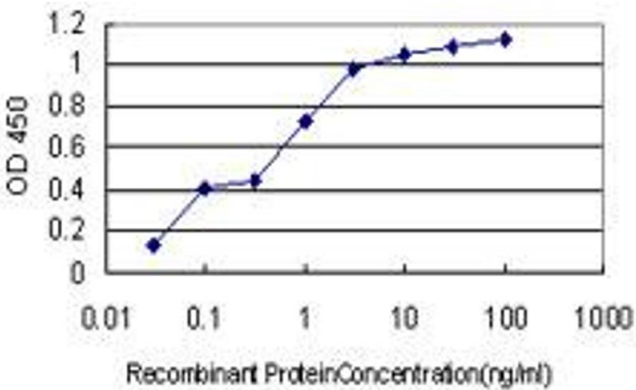
| | |
|------------------|--|
| Buffer: | In 1x PBS, pH 7.4 |
| Handling Advice: | Aliquot to avoid repeated freezing and thawing. |
| Storage: | -20 °C |
| Storage Comment: | Store at -20°C or lower. Aliquot to avoid repeated freezing and thawing. |

Images



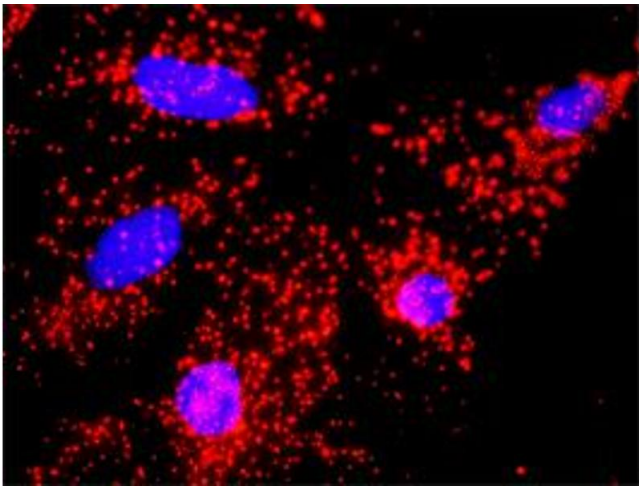
Western Blotting

Image 1. Western Blot detection against Immunogen (31.68 kDa) .



ELISA

Image 2. Detection limit for recombinant GST tagged ANAPC11 is approximately 0.03ng/ml as a capture antibody.



Proximity Ligation Assay

Image 3. Proximity Ligation Analysis of protein-protein interactions between CDC20 and ANAPC11. HeLa cells were stained with anti-CDC20 rabbit purified polyclonal 1:1200 and anti-ANAPC11 mouse monoclonal antibody 1:50. Each red dot represents the detection of protein-protein interaction complex, and nuclei were counterstained with DAPI (blue).