

Datasheet for ABIN565648
anti-SUFUH antibody (AA 181-280)

2 Images

[Go to Product page](#)

Overview

Quantity:	100 µg
Target:	SUFUH
Binding Specificity:	AA 181-280
Reactivity:	Human
Host:	Mouse
Clonality:	Monoclonal
Conjugate:	This SUFUH antibody is un-conjugated
Application:	ELISA, Proximity Ligation Assay (PLA)

Product Details

Purpose:	Mouse monoclonal antibody raised against a partial recombinant SUFU.
Immunogen:	SUFU (AAH13291, 181 a.a. ~ 280 a.a) partial recombinant protein with GST tag. MW of the GST tag alone is 26 KDa.
Sequence:	EDPQMMPVQT PFGVVTFLQI VGVCTEELHS AQQWNGQGIL ELLRTVPIAG GPWLITDMRR GETIFEIDPH LQERVDKGIE TDGSNLGSGVS AKCAWDDLSR
Clone:	1B2
Isotype:	IgG2a
Cross-Reactivity:	Human
Characteristics:	Antibody Reactive Against Recombinant Protein.

Target Details

Target:	SUFUH
Alternative Name:	SUFU (SUFUH Products)
Background:	Full Gene Name: suppressor of fused homolog (Drosophila) Synonyms: PRO1280,SUFUH,SUFUXL
Gene ID:	51684
Pathways:	Hedgehog Signaling , Tube Formation , Maintenance of Protein Location

Application Details

Application Notes:	Optimal working dilution should be determined by the investigator.
Restrictions:	For Research Use only

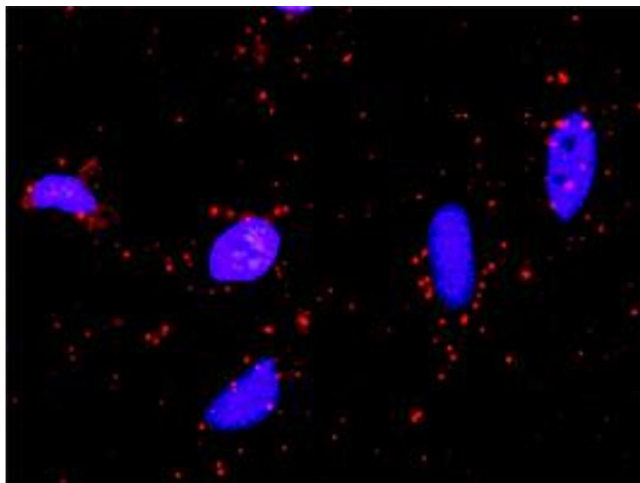
Handling

Buffer:	In 1x PBS, pH 7.4
Handling Advice:	Aliquot to avoid repeated freezing and thawing.
Storage:	-20 °C
Storage Comment:	Store at -20°C or lower. Aliquot to avoid repeated freezing and thawing.

Images

ELISA

Image 1. Detection limit for recombinant GST tagged SUFU is approximately 0.1 ng/ml as a capture antibody.



Proximity Ligation Assay

Image 2. Proximity Ligation Analysis of protein-protein interactions between STK36 and SUFU. HeLa cells were stained with anti-STK36 rabbit purified polyclonal 1:1200 and anti-SUFU mouse monoclonal antibody 1:50. Each red dot represents the detection of protein-protein interaction complex, and nuclei were counterstained with DAPI (blue).