

Datasheet for ABIN565661
anti-POLR3K antibody (AA 1-108)



[Go to Product page](#)

4 Images

Overview

Quantity:	100 µg
Target:	POLR3K
Binding Specificity:	AA 1-108
Reactivity:	Human
Host:	Mouse
Clonality:	Monoclonal
Conjugate:	This POLR3K antibody is un-conjugated
Application:	Western Blotting (WB), ELISA, Immunofluorescence (IF)

Product Details

Purpose:	Mouse monoclonal antibody raised against a full length recombinant POLR3K.
Immunogen:	POLR3K (AAH11932, 1 a.a. ~ 108 a.a) full-length recombinant protein with GST tag. MW of the GST tag alone is 26 KDa.
Sequence:	MLLFPCPGCGN GLIVEEGQRC HRFACNTCPY VHNITRKVTN RKYPKLKEVD DVLGGAAAW E NVDSTAESCP KCEHPRAYFM QLQTRSADEP MTTFYKCCNA QCGHRWRD
Clone:	3F5
Isotype:	IgG1
Cross-Reactivity:	Human
Characteristics:	Antibody Reactive Against Recombinant Protein.

Target Details

Target:	POLR3K
Alternative Name:	POLR3K (POLR3K Products)
Background:	Full Gene Name: polymerase (RNA) III (DNA directed) polypeptide K, 12.3 kDa Synonyms: C11,C11-RNP3,My010,RPC10,RPC11,hRPC11
Gene ID:	51728

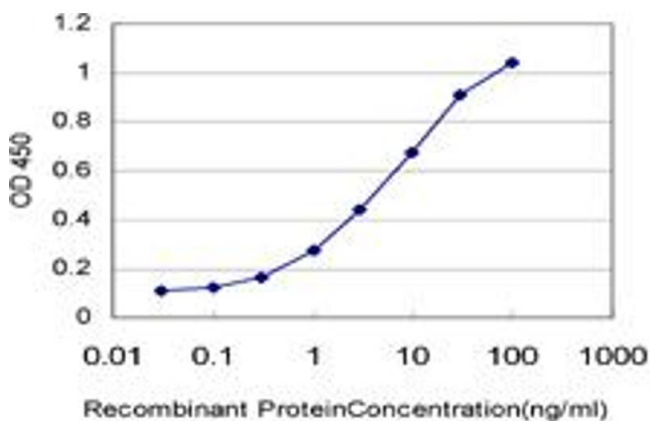
Application Details

Application Notes:	Optimal working dilution should be determined by the investigator.
Restrictions:	For Research Use only

Handling

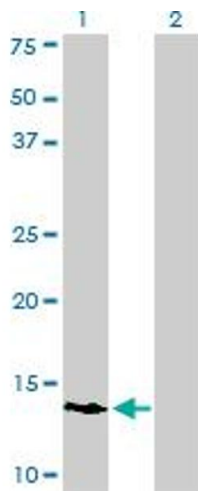
Buffer:	In 1x PBS, pH 7.4
Handling Advice:	Aliquot to avoid repeated freezing and thawing.
Storage:	-20 °C
Storage Comment:	Store at -20°C or lower. Aliquot to avoid repeated freezing and thawing.

Images



ELISA

Image 1. Detection limit for recombinant GST tagged POLR3K is approximately 0.1ng/ml as a capture antibody.

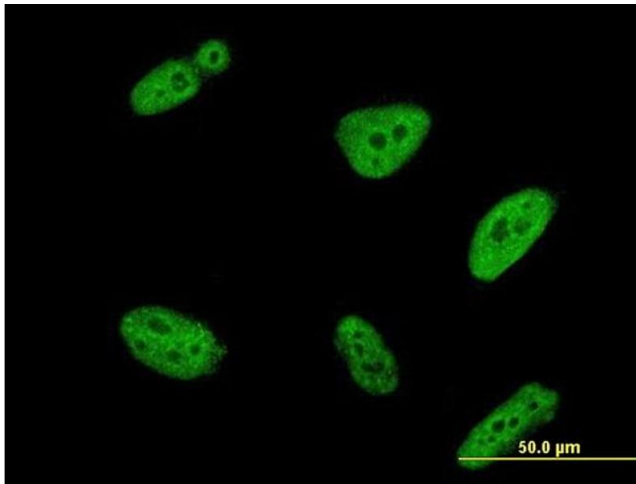


Western Blotting

Image 2. Western Blot analysis of POLR3K expression in transfected 293T cell line by POLR3K monoclonal antibody (M01), clone 3F5.

Lane 1: POLR3K transfected lysate(12.3 kDa).

Lane 2: Non-transfected lysate.



Immunofluorescence

Image 3. Immunofluorescence of monoclonal antibody to POLR3K on HeLa cell. [antibody concentration 10 ug/ml]

Please check the [product details page](#) for more images. Overall 4 images are available for ABIN565661.