



[Go to Product page](#)

Datasheet for ABIN565666

anti-Ghrelin antibody (AA 1-117)

4 Images

1 Publication

Overview

Quantity:	100 µg
Target:	Ghrelin (GHRL)
Binding Specificity:	AA 1-117
Reactivity:	Human
Host:	Mouse
Clonality:	Monoclonal
Conjugate:	This Ghrelin antibody is un-conjugated
Application:	Western Blotting (WB), ELISA, Immunohistochemistry (Paraffin-embedded Sections) (IHC (p))

Product Details

Purpose:	Mouse monoclonal antibody raised against a full length recombinant GHRL.
Immunogen:	GHRL (AAH25791.1, 1 a.a. ~ 117 a.a) full-length recombinant protein with GST tag. MW of the GST tag alone is 26 KDa.
Sequence:	MPSPGTVCSL LLLGMLWLDL AMAGSSFLSP EHQRVQQRKE SKKPPAKLQP RALAGWLRPE DGGQAE GAED EMEVRFNAPF DVGIKLSGVQ YQHSQALGK FLQDILWEEA KEAPADK
Clone:	2F4
Isotype:	IgG2a
Cross-Reactivity:	Human
Characteristics:	Antibody Reactive Against Recombinant Protein.

Target Details

Target:	Ghrelin (GHRL)
Alternative Name:	GHRL (GHRL Products)
Background:	Full Gene Name: ghrelin/obestatin prepropeptide Synonyms: MTLRP,obestatin
Gene ID:	51738
Pathways:	Positive Regulation of Peptide Hormone Secretion , Hormone Transport , Peptide Hormone Metabolism , Negative Regulation of Hormone Secretion , Synaptic Membrane , Feeding Behaviour

Application Details

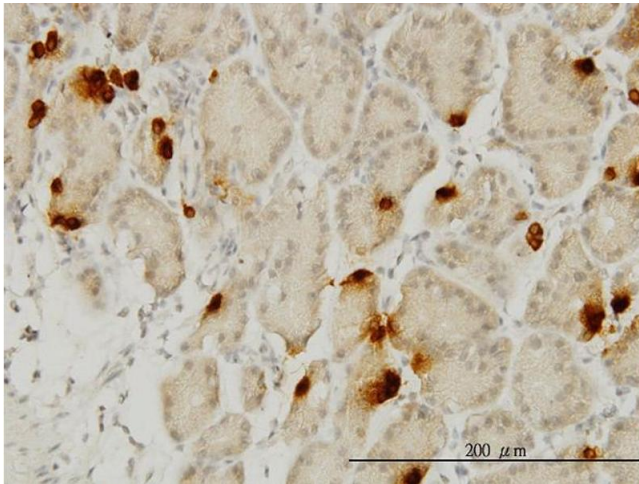
Application Notes:	Optimal working dilution should be determined by the investigator.
Restrictions:	For Research Use only

Handling

Buffer:	In 1x PBS, pH 7.4
Handling Advice:	Aliquot to avoid repeated freezing and thawing.
Storage:	-20 °C
Storage Comment:	Store at -20°C or lower. Aliquot to avoid repeated freezing and thawing.

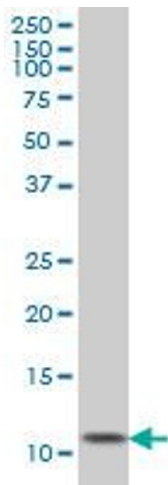
Publications

Product cited in:	Goitein, Lederfein, Tzioni, Berkenstadt, Venturero, Rubin: "Mapping of ghrelin gene expression and cell distribution in the stomach of morbidly obese patients--a possible guide for efficient sleeve gastrectomy construction." in: Obesity surgery , Vol. 22, Issue 4, pp. 617-22, (2012) (PubMed).
-------------------	--



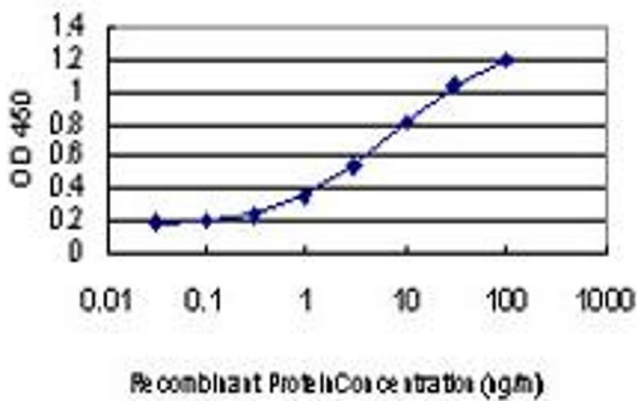
Immunostaining

Image 1. Immunoperoxidase of monoclonal antibody to GHRL on formalin-fixed paraffin-embedded human stomach. [antibody concentration 1.5 ug/ml]



Western Blotting

Image 2. GHRL monoclonal antibody (M01), clone 2F4. Western Blot analysis of GHRL expression in HeLa.



ELISA

Image 3. Detection limit for recombinant GST tagged GHRL is approximately 0.1 ng/ml as a capture antibody.

Please check the [product details page](#) for more images. Overall 4 images are available for ABIN565666.