

Datasheet for ABIN565739  
**anti-KRT20 antibody (AA 1-424)**



[Go to Product page](#)

7 Images

Overview

Quantity:	100 µg
Target:	KRT20
Binding Specificity:	AA 1-424
Reactivity:	Human
Host:	Mouse
Clonality:	Monoclonal
Conjugate:	This KRT20 antibody is un-conjugated
Application:	Western Blotting (WB), ELISA, Immunohistochemistry (Paraffin-embedded Sections) (IHC (p)), Immunofluorescence (IF)

Product Details

Purpose:	Mouse monoclonal antibody raised against a full length recombinant KRT20.
Immunogen:	KRT20 (AAH31559, 1 a.a. ~ 424 a.a) full-length recombinant protein with GST tag. MW of the GST tag alone is 26 KDa.
Sequence:	MDFSRRSFHR SLSSSLQAPV VSTVGMQRLG TTPSVYGGAG GRGIRISNSR HTVNYGSDLT GGDLFVGNE KMAMQNLNDR LASYLEKVRT LEQSNSKLEV QIKQWYETNA PRAGRDYSAY YRQIEELRSQ IKDAQLNAR CVLQIDNAKL AAEDFRLKYE TERGIRLTVE ADLQGLNKVF DDLTLHKTDL EIQIEELNKD LALLKKEHQE EVDGLHKHLG NTVNVEVDAA PGLNLGVIMN EMRQKYEVMA QKNLQEAKEQ FERQTAVLQQ QVTVNTEELK GTEVQLTELR RTSQSLEIEL QSHLSMKESL EHTLEETKAR YSSQLANLQS LLSSLEAQLM QIRSNMERQN NEYHILLDIK TRLEQEIATY RRLLEGEDVK TTEYQLSTLE ERDIKTRKI KTVVQEVVDG KVSSEVKEV EENI

## Product Details

---

Clone:	2G3-1C8
Isotype:	IgG1
Cross-Reactivity:	Human
Characteristics:	Antibody Reactive Against Recombinant Protein.

## Target Details

---

Target:	KRT20
Alternative Name:	KRT20 ( <a href="#">KRT20 Products</a> )
Background:	Full Gene Name: keratin 20 Synonyms: CD20,CK20,K20,KRT21,MGC35423
Gene ID:	54474

## Application Details

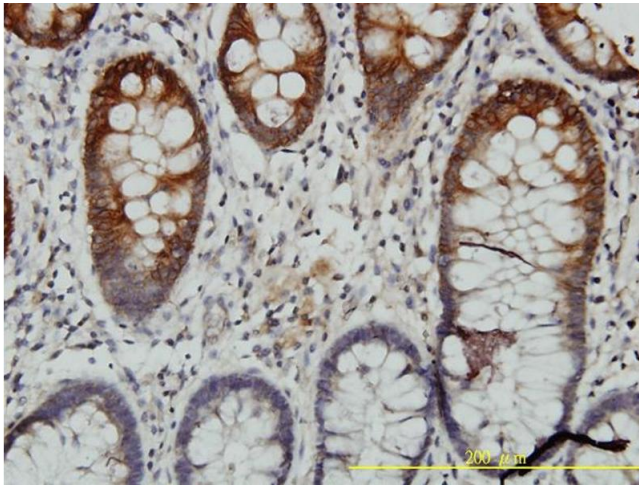
---

Application Notes:	Optimal working dilution should be determined by the investigator.
Restrictions:	For Research Use only

## Handling

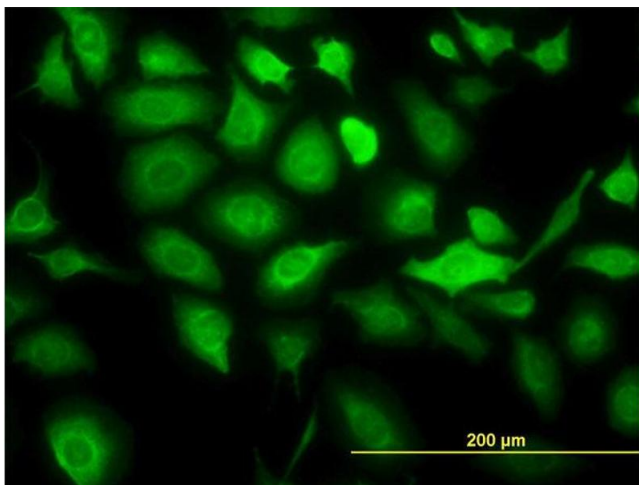
---

Buffer:	In 1x PBS, pH 7.4
Handling Advice:	Aliquot to avoid repeated freezing and thawing.
Storage:	-20 °C
Storage Comment:	Store at -20°C or lower. Aliquot to avoid repeated freezing and thawing.



### Immunostaining

**Image 1.** Immunoperoxidase of monoclonal antibody to KRT20 on formalin-fixed paraffin-embedded human colon tissue. [antibody concentration 3 ug/ml]



### Immunofluorescence

**Image 2.** Immunofluorescence of monoclonal antibody to KRT20 on HeLa cell. [antibody concentration 10 ug/ml]



### Western Blotting

**Image 3.** KRT20 monoclonal antibody (M01), clone 2G3-1C8 Western Blot analysis of KRT20 expression in A-431 .

Please check the [product details page](#) for more images. Overall 7 images are available for ABIN565739.