

Datasheet for ABIN565742
anti-CPVL antibody (AA 1-476)



[Go to Product page](#)

1 Image

Overview

Quantity:	50 µL
Target:	CPVL
Binding Specificity:	AA 1-476
Reactivity:	Human
Host:	Mouse
Clonality:	Polyclonal
Conjugate:	This CPVL antibody is un-conjugated
Application:	Western Blotting (WB), ELISA

Product Details

Purpose:	Mouse polyclonal antibody raised against a full-length recombinant CPVL.
Immunogen:	CPVL (AAH16838.1, 1 a.a. ~ 476 a.a) full-length recombinant protein with GST tag.
Sequence:	MVGAMWKVIV SLVLLMPGPC DGLFRSLYRS VSMPPKGDGSG QPLFLTPYIE AGKIQKGREL SLVGPFPGLN MKSYAGFLTV NKTYNLNFF WFFPAQIQPE DAPVVLWLQG GPGGSSMFGL FVEHGPYVVT SNMTLRDRDF PWTTLTSMY IDNPVGTGFS FTDDTHGYAV NEDDVARDLY SALIQFFQIF PEYKNNDYFV TGESYAGKYV PAIAHLIHL NPVREVKINL NGIAIGDGYS DPESIIGGYA EFLYQIGLLD EKQKKYFQKQ CHECIEHIRK QNWFEAFEIL DKLLDGD LTS DPSYFQNV TG CSNYNFLRC TEPEDQLYV KFLSLPEVRQ AIHVGNQTFN DGTIVEKYLR EDTVQSVKPW LTEIMNMYKV LIYNGQLDII VAAALTERSL MGMDWKGSQE YKKAEEKVWK IFKSDSEVAG YIRQVGFHQ VIIRGGGHIL PYDQPLRAFD MINRFIYGKG WDPYVG
Cross-Reactivity:	Human

Product Details

Characteristics: Antibody Reactive Against Recombinant Protein.

Target Details

Target: CPVL

Alternative Name: CPVL ([CPVL Products](#))

Background: Full Gene Name: carboxypeptidase, vitellogenic-like
Synonyms: HVLP,MGC10029

Gene ID: 54504

Application Details

Application Notes: Optimal working dilution should be determined by the investigator.

Restrictions: For Research Use only

Handling

Format: Liquid

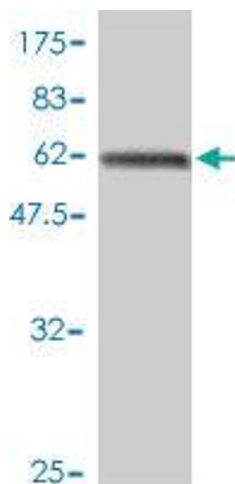
Buffer: 50 % glycerol

Handling Advice: Aliquot to avoid repeated freezing and thawing.

Storage: -20 °C

Storage Comment: Store at -20°C or lower. Aliquot to avoid repeated freezing and thawing.

Images



Western Blotting

Image 1. Western Blot detection against Immunogen (78.47 KDa) .