

Datasheet for ABIN565743
anti-CPVL antibody (AA 1-476)



[Go to Product page](#)

4 Images

Overview

| | |
|----------------------|--|
| Quantity: | 100 µg |
| Target: | CPVL |
| Binding Specificity: | AA 1-476 |
| Reactivity: | Human |
| Host: | Mouse |
| Clonality: | Monoclonal |
| Conjugate: | This CPVL antibody is un-conjugated |
| Application: | Western Blotting (WB), ELISA, Immunofluorescence (IF), Immunohistochemistry (Paraffin-embedded Sections) (IHC (p)) |

Product Details

| | |
|------------|--|
| Purpose: | Mouse monoclonal antibody raised against a full length recombinant CPVL. |
| Immunogen: | CPVL (AAH16838.1, 1 a.a. ~ 476 a.a) full-length recombinant protein with GST tag. MW of the GST tag alone is 26 kDa. |
| Sequence: | MVGAMWKVIV SLVLLMPGPC DGLFRSLYRS VSMPPKGDGSG QPLFLTPYIE AGKIQKGREL SLVGPFPGLN MKSYAGFLTV NKTYNLFF WFFPAQIQPE DAPVVLWLQG GPGGSSMFGL FVEHGPYVVT SNMTRLRDRDF PWTTTTLSMLY IDNPVGTGFS FTDDTHGYAV NEDDVARLDY SALIQQFQIF PEYKNNDFYV TGESYAGKYV PAIAHLIHL NPVREVKINL NGIAIGDGYS DPESIIGGYA EFLYQIGLLD EKQKKYFQKQ CHECIEHIRK QNWFEAFEIL DKLLDGD LTS DPSYFQNV TG CSNYNFLRC TEPEDQLYYV KFLSLPEVRQ AIHVG NQTFN DGTIVEKYLR EDTVQSVKPW LTEIMNNYKV LIYNGQLDII VAAALTERSL MGMTDWKGSQE YKKAEEKVWK IFKSDSEVAG YIRQVGFHQ VIIRGGGHIL PYDQPLRAFD MINRFIYGKG WDPYVG |

Product Details

| | |
|-------------------|--|
| Clone: | 2G5-1C1 |
| Isotype: | IgG1 |
| Cross-Reactivity: | Human |
| Characteristics: | Antibody Reactive Against Recombinant Protein. |

Target Details

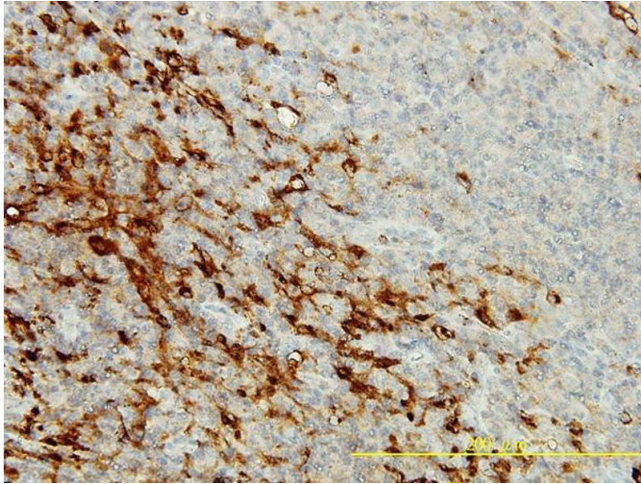
| | |
|-------------------|--|
| Target: | CPVL |
| Alternative Name: | CPVL (CPVL Products) |
| Background: | Full Gene Name: carboxypeptidase, vitellogenic-like Synonyms: HVLP,MGC10029 |
| Gene ID: | 54504 |

Application Details

| | |
|--------------------|--|
| Application Notes: | Optimal working dilution should be determined by the investigator. |
| Restrictions: | For Research Use only |

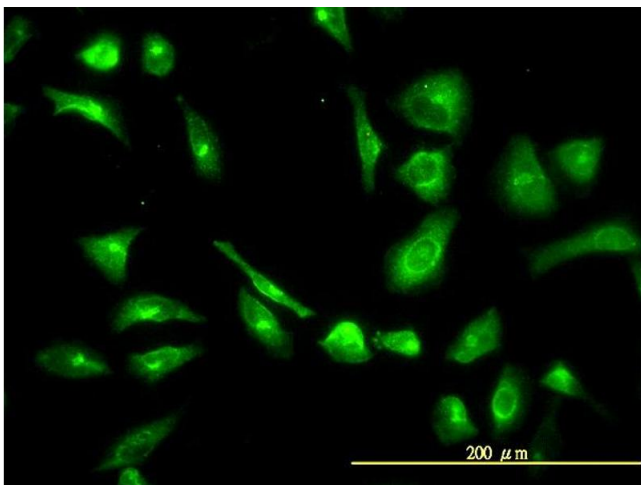
Handling

| | |
|------------------|--|
| Buffer: | In 1x PBS, pH 7.4 |
| Handling Advice: | Aliquot to avoid repeated freezing and thawing. |
| Storage: | -20 °C |
| Storage Comment: | Store at -20°C or lower. Aliquot to avoid repeated freezing and thawing. |



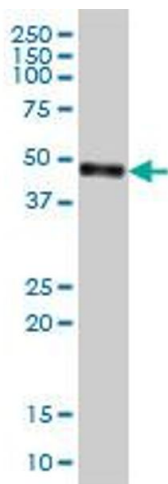
Immunostaining

Image 1. Immunoperoxidase of monoclonal antibody to CPVL on formalin-fixed paraffin-embedded human lymphoma tissue. [antibody concentration 2 ug/ml]



Immunofluorescence

Image 2. Immunofluorescence of monoclonal antibody to CPVL on HeLa cell. [antibody concentration 10 ug/ml]



Western Blotting

Image 3. CPVL monoclonal antibody (M01), clone 2G5-1C1 Western Blot analysis of CPVL expression in Jurkat .

Please check the [product details page](#) for more images. Overall 4 images are available for ABIN565743.