



[Go to Product page](#)

Datasheet for ABIN565795  
**anti-UCKL1 antibody (AA 301-400)**

4 Images

Overview

Quantity:	100 µg
Target:	UCKL1
Binding Specificity:	AA 301-400
Reactivity:	Human
Host:	Mouse
Clonality:	Monoclonal
Conjugate:	This UCKL1 antibody is un-conjugated
Application:	Western Blotting (WB), ELISA, Immunofluorescence (IF)

Product Details

Purpose:	Mouse monoclonal antibody raised against a partial recombinant UCKL1.
Immunogen:	UCKL1 (NP_060329, 301 a.a. ~ 400 a.a) partial recombinant protein with GST tag. MW of the GST tag alone is 26 KDa.
Sequence:	EERELSVRAA LASAHQCHPL PRTL SVLKST PQVRGMHTII RDKETS RDEF IFYSKRLMRL LIEHALSFLP FQDCVVQTPQ GQDYAGKCYA GKQITGVSIL
Clone:	8D4
Isotype:	IgG1
Cross-Reactivity:	Human, Mouse
Characteristics:	Antibody Reactive Against Recombinant Protein.

## Target Details

Target:	UCKL1
Alternative Name:	UCKL1 ( <a href="#">UCKL1 Products</a> )
Background:	Full Gene Name: uridine-cytidine kinase 1-like 1 Synonyms: UCK1-LIKE,UCK1L,URKL1
Gene ID:	54963
NCBI Accession:	<a href="#">NM_017859</a>
Pathways:	<a href="#">Ribonucleoside Biosynthetic Process</a>

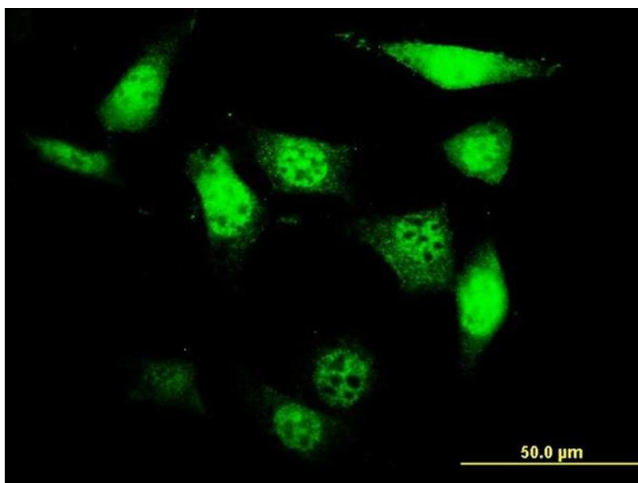
## Application Details

Application Notes:	Optimal working dilution should be determined by the investigator.
Restrictions:	For Research Use only

## Handling

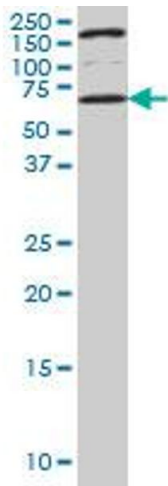
Buffer:	In 1x PBS, pH 7.4
Handling Advice:	Aliquot to avoid repeated freezing and thawing.
Storage:	-20 °C
Storage Comment:	Store at -20°C or lower. Aliquot to avoid repeated freezing and thawing.

## Images



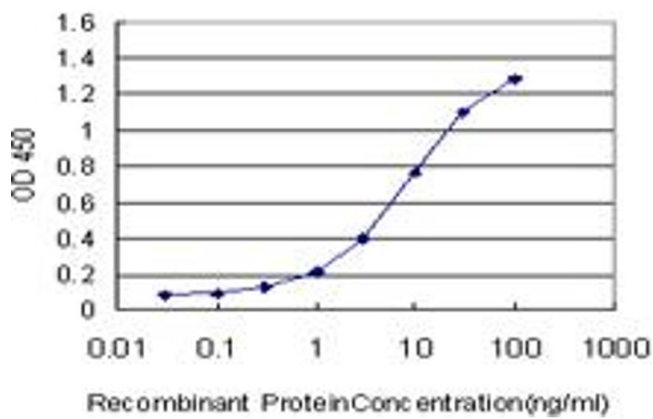
### Immunofluorescence

**Image 1.** Immunofluorescence of monoclonal antibody to UCKL1 on NIH/3T3 cell. [antibody concentration 10 ug/ml]



### Western Blotting

**Image 2.** UCKL1 monoclonal antibody (M01), clone 8D4 Western Blot analysis of UCKL1 expression in NIH/3T3 .



### ELISA

**Image 3.** Detection limit for recombinant GST tagged UCKL1 is approximately 0.3ng/ml as a capture antibody.

Please check the [product details page](#) for more images. Overall 4 images are available for ABIN565795.