



[Go to Product page](#)

Datasheet for ABIN565824
anti-LRRC8D antibody (AA 1-143)

3 Images

Overview

Quantity:	100 µg
Target:	LRRC8D
Binding Specificity:	AA 1-143
Reactivity:	Human
Host:	Mouse
Clonality:	Monoclonal
Conjugate:	This LRRC8D antibody is un-conjugated
Application:	ELISA, Western Blotting (WB)

Product Details

Purpose:	Mouse monoclonal antibody raised against a full length recombinant LRRC5.
Immunogen:	LRRC5 (AAH09486, 1 a.a. ~ 143 a.a) full-length recombinant protein with GST tag. MW of the GST tag alone is 26 KDa.
Sequence:	MVSSNFWFKY PKTCSKVEHF VSILGKCFES PWTTKALSET ACEDSEENKQ RITGAQTLPK HVSTSSDEGS PSASTPMINK TGFKFSAEKP VIEVPSMTIL DKKDGEQAKA LFEKVRKFRA HVEDSDLIYK LYVVQTASPF PNQ
Clone:	3H1-1C2
Isotype:	IgG1
Cross-Reactivity:	Human
Characteristics:	Antibody Reactive Against Recombinant Protein.

Target Details

Target:	LRRRC8D
Alternative Name:	LRRRC8D (LRRRC8D Products)
Background:	Full Gene Name: leucine rich repeat containing 8 family, member D Synonyms: FLJ10470,FLJ20403,LRRRC5
Gene ID:	55144

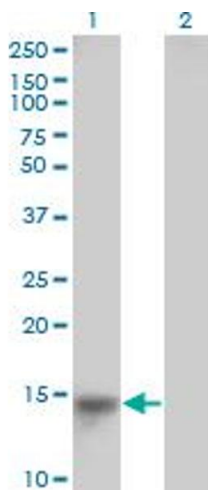
Application Details

Application Notes:	Optimal working dilution should be determined by the investigator.
Restrictions:	For Research Use only

Handling

Buffer:	In 1x PBS, pH 7.4
Handling Advice:	Aliquot to avoid repeated freezing and thawing.
Storage:	-20 °C
Storage Comment:	Store at -20°C or lower. Aliquot to avoid repeated freezing and thawing.

Images

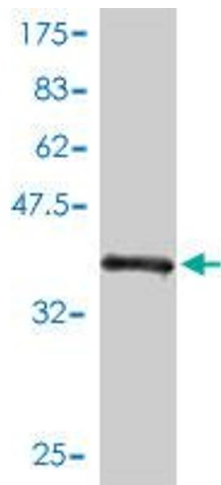


Western Blotting

Image 1. Western Blot analysis of LRRRC8D expression in transfected 293T cell line by LRRRC5 monoclonal antibody (M01), clone 3H1-1C2.

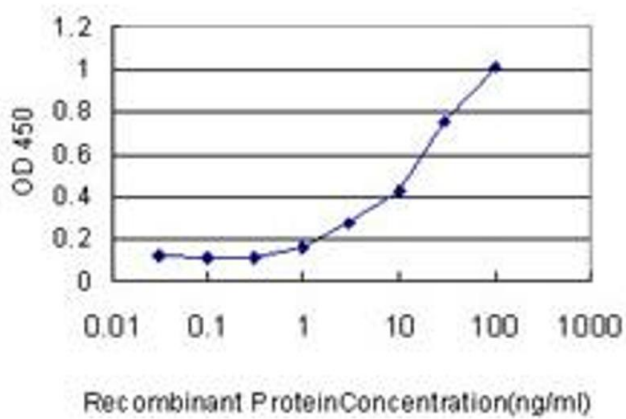
Lane 1: LRRRC8D transfected lysate(16 kDa).

Lane 2: Non-transfected lysate.



Western Blotting

Image 2. Western Blot detection against Immunogen (41.47 kDa).



ELISA

Image 3. Detection limit for recombinant GST tagged LRRC8D is approximately 1ng/ml as a capture antibody.