



[Go to Product page](#)

Datasheet for ABIN565840
anti-RPRD1A antibody (AA 76-170)

6 Images

Overview

Quantity:	100 µg
Target:	RPRD1A
Binding Specificity:	AA 76-170
Reactivity:	Human
Host:	Mouse
Clonality:	Monoclonal
Conjugate:	This RPRD1A antibody is un-conjugated
Application:	ELISA, Western Blotting (WB), Immunohistochemistry (Paraffin-embedded Sections) (IHC (p))

Product Details

Purpose:	Mouse monoclonal antibody raised against a partial recombinant RPRD1A.
Immunogen:	RPRD1A (NP_060640, 76 a.a. ~ 170 a.a) partial recombinant protein with GST tag. MW of the GST tag alone is 26 KDa.
Sequence:	EFTKDFAPVI VEAFKHVSSE TDESCKKHLG RVLSIWEERS VYENDVLEQL KQALYGDKKP RKRTYEQIKV DENENCSSLG SPSEPPQTLD LVRAL
Clone:	1B8
Isotype:	IgG2b
Cross-Reactivity:	Human, Mouse, Rat
Characteristics:	Antibody Reactive Against Recombinant Protein.

Target Details

Target:	RPRD1A
Alternative Name:	RPRD1A (RPRD1A Products)
Background:	Full Gene Name: regulation of nuclear pre-mRNA domain containing 1A Synonyms: FLJ10656,HsT3101,MGC19513,P15RS
Gene ID:	55197
NCBI Accession:	NM_018170

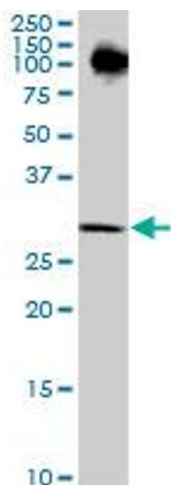
Application Details

Application Notes:	Optimal working dilution should be determined by the investigator.
Restrictions:	For Research Use only

Handling

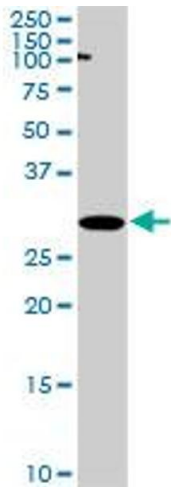
Buffer:	In 1x PBS, pH 7.4
Handling Advice:	Aliquot to avoid repeated freezing and thawing.
Storage:	-20 °C
Storage Comment:	Store at -20°C or lower. Aliquot to avoid repeated freezing and thawing.

Images



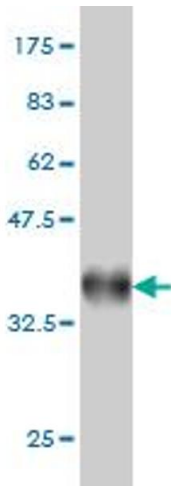
Western Blotting

Image 1. RPRD1A monoclonal antibody (M01), clone 1B8.
Western Blot analysis of RPRD1A expression in NIH/3T3 .



Western Blotting

Image 2. RPRD1A monoclonal antibody (M01), clone 1B8. Western Blot analysis of RPRD1A expression in PC-12 .



Western Blotting

Image 3. Western Blot detection against Immunogen (36.19 kDa) .

Please check the [product details page](#) for more images. Overall 6 images are available for ABIN565840.