



Datasheet for ABIN565880
anti-MRCKG antibody (AA 1423-1528)



[Go to Product page](#)

1 Image

Overview

Quantity:	50 µL
Target:	MRCKG (CDC42BPG)
Binding Specificity:	AA 1423-1528
Reactivity:	Human
Host:	Mouse
Clonality:	Polyclonal
Conjugate:	This MRCKG antibody is un-conjugated
Application:	ELISA, Western Blotting (WB)

Product Details

Purpose:	Mouse polyclonal antibody raised against a partial recombinant CDC42BPG.
Immunogen:	CDC42BPG (NP_059995, 1423 a.a. ~ 1528 a.a) partial recombinant protein with GST tag.
Sequence:	RREMLKDPFV RSKLISPPTN FNHLVHVGPA NGRPGARDKS PAPEEKGRVA RGSGPQRPHS FSEALRRPAS MGSEGLGGDA DPMKRKPWTS LSESVSQPCQ GSLSPA
Cross-Reactivity:	Human
Characteristics:	Antibody Reactive Against Recombinant Protein.

Target Details

Target:	MRCKG (CDC42BPG)
Alternative Name:	CDC42BPG (CDC42BPG Products)

Target Details

Background:	Full Gene Name: CDC42 binding protein kinase gamma (DMPK-like) Synonyms: DMPK2,HSMDPKIN,KAPPA-200,MRCKgamma
Gene ID:	55561
NCBI Accession:	NM_017525

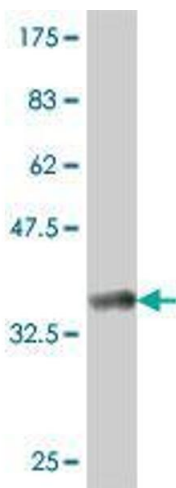
Application Details

Application Notes:	Optimal working dilution should be determined by the investigator.
Restrictions:	For Research Use only

Handling

Format:	Liquid
Buffer:	50 % glycerol
Handling Advice:	Aliquot to avoid repeated freezing and thawing.
Storage:	-20 °C
Storage Comment:	Store at -20°C or lower. Aliquot to avoid repeated freezing and thawing.

Images



Western Blotting

Image 1. Western Blot detection against Immunogen (37.77 KDa) .