

Datasheet for ABIN565892  
**anti-THUMPD1 antibody (AA 1-353)**



[Go to Product page](#)

4 Images

## Overview

Quantity:	100 µg
Target:	THUMPD1
Binding Specificity:	AA 1-353
Reactivity:	Human
Host:	Mouse
Clonality:	Monoclonal
Conjugate:	This THUMPD1 antibody is un-conjugated
Application:	Western Blotting (WB), ELISA, Immunohistochemistry (Paraffin-embedded Sections) (IHC (p))

## Product Details

Purpose:	Mouse monoclonal antibody raised against a full length recombinant THUMPD1.
Immunogen:	THUMPD1 (AAH00448, 1 a.a. ~ 353 a.a) full-length recombinant protein with GST tag. MW of the GST tag alone is 26 KDa.
Sequence:	MAAPAAQTTQ PGGGKRKGKA QYVLAKRARR CDAGGPRQLE PGLQGILITC NMNERKCVVEE AYSLLNEYGD DMYGPEKFTD KDQQPSGSEG EDDDAEAALK KEVGDIAKAST EMRLRRFQSV ESGANNVFI RTLGIEPEKL VHHILQDMYK TKKKKTRVIL RMLPISGTCK AFLEDMKKYA ETFLEPWFKA PNKGTFFQIVY KSRNNSHVNR EEVIRELAGI VCTLNSENKV DLTNPQYTVV VEIHKAVCCL SVVKDYMLFR KYNLQEVVKS PKDPSQLNSK QGNGKEAKLE SADKSDQNNT AEGKNNQVQP ENTEELGQTK PTSNPQVVNE GGAKPELASQ ATEGSKSNEN DFS
Clone:	4A11
Isotype:	IgG1

## Product Details

Cross-Reactivity:	Human
Characteristics:	Antibody Reactive Against Recombinant Protein.

## Target Details

Target:	THUMPD1
Alternative Name:	THUMPD1 ( <a href="#">THUMPD1 Products</a> )
Background:	Full Gene Name: THUMP domain containing 1 Synonyms: DKFZp686C1054
Gene ID:	55623

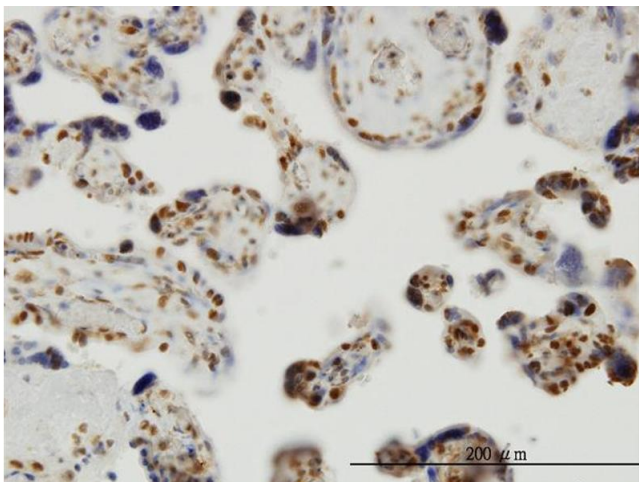
## Application Details

Application Notes:	Optimal working dilution should be determined by the investigator.
Restrictions:	For Research Use only

## Handling

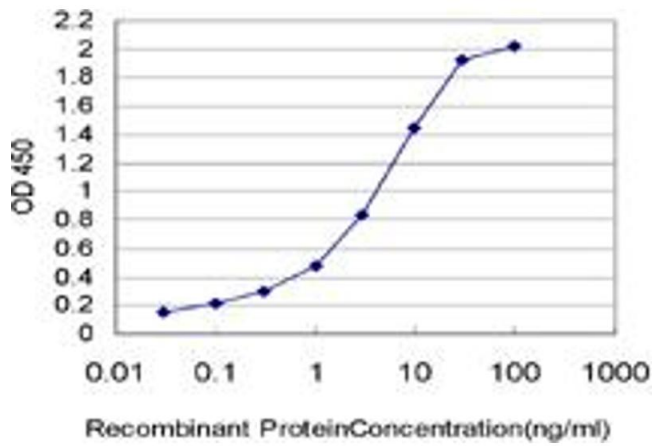
Buffer:	In 1x PBS, pH 7.4
Handling Advice:	Aliquot to avoid repeated freezing and thawing.
Storage:	-20 °C
Storage Comment:	Store at -20°C or lower. Aliquot to avoid repeated freezing and thawing.

## Images



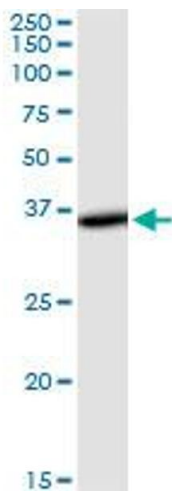
### Immunostaining

**Image 1.** Immunoperoxidase of monoclonal antibody to THUMPD1 on formalin-fixed paraffin-embedded human placenta. [antibody concentration 3 ug/ml]



### ELISA

**Image 2.** Detection limit for recombinant GST tagged THUMPD1 is approximately 0.03ng/ml as a capture antibody.



### Western Blotting

**Image 3.** THUMPD1 monoclonal antibody (M01), clone 4A11. Western Blot analysis of THUMPD1 expression in human kidney.

Please check the [product details page](#) for more images. Overall 4 images are available for ABIN565892.