

Datasheet for ABIN565894  
**anti-G2E3 antibody (AA 2-100)**



[Go to Product page](#)

1 Image

## Overview

Quantity:	50 µL
Target:	G2E3
Binding Specificity:	AA 2-100
Reactivity:	Human
Host:	Mouse
Clonality:	Polyclonal
Conjugate:	This G2E3 antibody is un-conjugated
Application:	ELISA, Western Blotting (WB)

## Product Details

Purpose:	Mouse polyclonal antibody raised against a partial recombinant KIAA1333.
Immunogen:	KIAA1333 (NP_060239, 2 a.a. ~ 100 a.a) partial recombinant protein with GST tag.
Sequence:	NESKPGDSQN LACVFCRKHD DCPNKYGEKK TKEKWNLTVH YYCLLMSSGI WQRGKEEEGV YGFLIEDIRK EVNRASKLKC CVCKKNGASI GCVAPRCKR
Cross-Reactivity:	Human
Characteristics:	Antibody Reactive Against Recombinant Protein.

## Target Details

Target:	G2E3
Alternative Name:	KIAA1333 ( <a href="#">G2E3 Products</a> )

## Target Details

Background:	Full Gene Name: KIAA1333 Synonyms: FLJ20333,G2E3,PHF7B
Gene ID:	55632
NCBI Accession:	<a href="#">NM_017769</a>

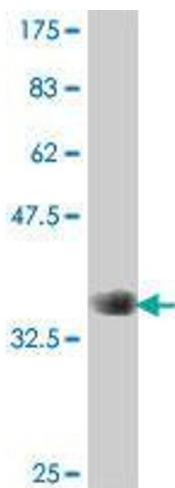
## Application Details

Application Notes:	Optimal working dilution should be determined by the investigator.
Restrictions:	For Research Use only

## Handling

Format:	Liquid
Buffer:	50 % glycerol
Handling Advice:	Aliquot to avoid repeated freezing and thawing.
Storage:	-20 °C
Storage Comment:	Store at -20°C or lower. Aliquot to avoid repeated freezing and thawing.

## Images



### Western Blotting

**Image 1.** Western Blot detection against Immunogen (37 kDa).