



[Go to Product page](#)

Datasheet for ABIN565956
anti-CMAS antibody (AA 164-263)

9 Images

Overview

Quantity:	100 µg
Target:	CMAS
Binding Specificity:	AA 164-263
Reactivity:	Human
Host:	Mouse
Clonality:	Monoclonal
Conjugate:	This CMAS antibody is un-conjugated
Application:	Western Blotting (WB), ELISA, Immunofluorescence (IF), Immunohistochemistry (Paraffin-embedded Sections) (IHC (p))

Product Details

Purpose:	Mouse monoclonal antibody raised against a partial recombinant CMAS.
Immunogen:	CMAS (NP_061156, 164 a.a. ~ 263 a.a) partial recombinant protein with GST tag. MW of the GST tag alone is 26 KDa.
Sequence:	EGYDSVFSV RRHQFRWSEI QKGVREVTEP LNLNPAKRPR RQDWDGELYE NGSFYFAKRH LIEMGYLQGG KMAYYEMRAE HSDVDIDVDID WPIAEQRVLR
Clone:	5A2
Isotype:	IgG2a
Cross-Reactivity:	Human, Mouse, Rat
Characteristics:	Antibody Reactive Against Recombinant Protein.

Target Details

Target:	CMAS
Alternative Name:	CMAS (CMAS Products)
Background:	Full Gene Name: cytidine monophosphate N-acetylneuraminic acid synthetase Synonyms:
Gene ID:	55907
NCBI Accession:	NM_018686

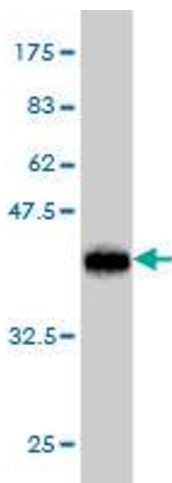
Application Details

Application Notes:	Optimal working dilution should be determined by the investigator.
Restrictions:	For Research Use only

Handling

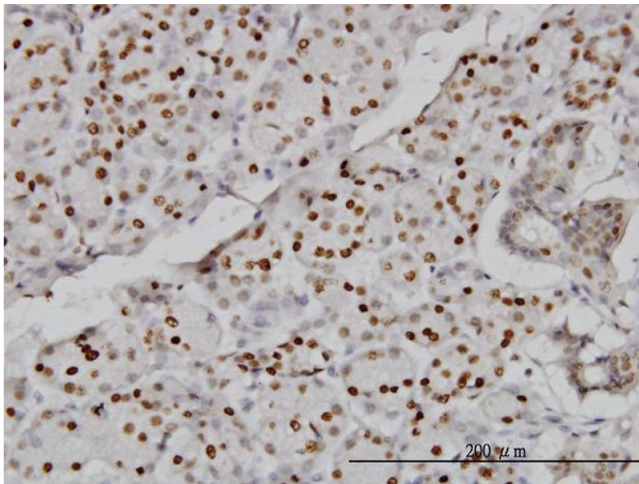
Buffer:	In 1x PBS, pH 7.4
Handling Advice:	Aliquot to avoid repeated freezing and thawing.
Storage:	-20 °C
Storage Comment:	Store at -20°C or lower. Aliquot to avoid repeated freezing and thawing.

Images



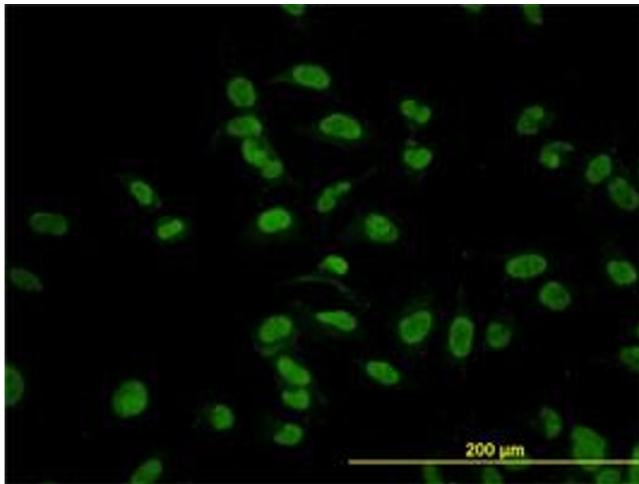
Western Blotting

Image 1. Western Blot detection against Immunogen (36.74 kDa).



Immunostaining

Image 2. Immunoperoxidase of monoclonal antibody to CMAS on formalin-fixed paraffin-embedded human salivary gland. [antibody concentration 3 ug/ml]



Immunofluorescence

Image 3. Immunofluorescence of monoclonal antibody to CMAS on HeLa cell. (antibody concentration 10 μg/mL)

Please check the [product details page](#) for more images. Overall 9 images are available for ABIN565956.