



[Go to Product page](#)

Datasheet for ABIN565999
anti-PCDHB6 antibody (AA 118-217)

2 Images

Overview

Quantity:	100 µg
Target:	PCDHB6
Binding Specificity:	AA 118-217
Reactivity:	Human
Host:	Mouse
Clonality:	Monoclonal
Conjugate:	This PCDHB6 antibody is un-conjugated
Application:	ELISA, Western Blotting (WB)

Product Details

Purpose:	Mouse monoclonal antibody raised against a partial recombinant PCDHB6.
Immunogen:	PCDHB6 (NP_061762, 118 a.a. ~ 217 a.a) partial recombinant protein with GST tag. MW of the GST tag alone is 26 KDa.
Sequence:	ASLRVRDIND HAPEFPAREM LLKISEITMP GKIFPLKMAH DLDTGSNGLQ RYTISSNPHF HVLTRNRSEG RKFPELVLDK PLDREEQPQL RLTLIALDGG
Clone:	2G11
Isotype:	IgG2a
Cross-Reactivity:	Human
Characteristics:	Antibody Reactive Against Recombinant Protein.

Target Details

Target:	PCDHB6
Alternative Name:	PCDHB6 (PCDHB6 Products)
Background:	Full Gene Name: protocadherin beta 6 Synonyms: PCDH-BETA6
Gene ID:	56130
NCBI Accession:	NM_018939

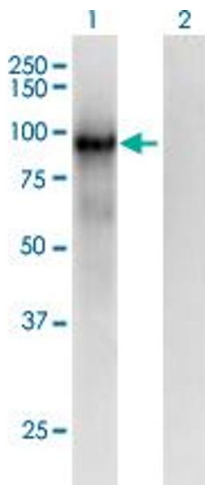
Application Details

Application Notes:	Optimal working dilution should be determined by the investigator.
Restrictions:	For Research Use only

Handling

Buffer:	In 1x PBS, pH 7.4
Handling Advice:	Aliquot to avoid repeated freezing and thawing.
Storage:	-20 °C
Storage Comment:	Store at -20°C or lower. Aliquot to avoid repeated freezing and thawing.

Images

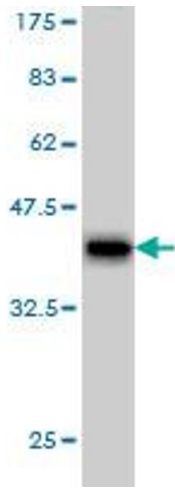


Western Blotting

Image 1. Western Blot analysis of PCDHB6 expression in transfected 293T cell line by PCDHB6 monoclonal antibody (M01), clone 2G11.

Lane 1: PCDHB6 transfected lysate (Predicted MW: 87.34 kDa).

Lane 2: Non-transfected lysate.



Western Blotting

Image 2. Western Blot detection against Immunogen (36.74 kDa).