



[Go to Product page](#)

Datasheet for ABIN566025

anti-EIF4ENIF1 antibody (AA 886-985)

2 Images

Overview

Quantity:	50 µL
Target:	EIF4ENIF1
Binding Specificity:	AA 886-985
Reactivity:	Human
Host:	Mouse
Clonality:	Polyclonal
Conjugate:	This EIF4ENIF1 antibody is un-conjugated
Application:	Western Blotting (WB), ELISA

Product Details

Purpose:	Mouse polyclonal antibody raised against a partial recombinant EIF4ENIF1.
Immunogen:	EIF4ENIF1 (NP_062817, 886 a.a. ~ 985 a.a) partial recombinant protein with GST tag.
Sequence:	NPRPGTPLHL AMVQQQLQRS VLHPPGSGSH AAVSVQTTP QNVPSRSLP HMHSQLEHRP SQRSSSPVGL AKWFGSDVLQ QPLPSMPAKV ISVDELEYRQ
Cross-Reactivity:	Human
Characteristics:	Antibody Reactive Against Recombinant Protein.

Target Details

Target:	EIF4ENIF1
Alternative Name:	EIF4ENIF1 (EIF4ENIF1 Products)

Target Details

Background:	Full Gene Name: eukaryotic translation initiation factor 4E nuclear import factor 1 Synonyms: 4E-T,Clast4,FLJ21601,FLJ26551
Gene ID:	56478
NCBI Accession:	NM_019843

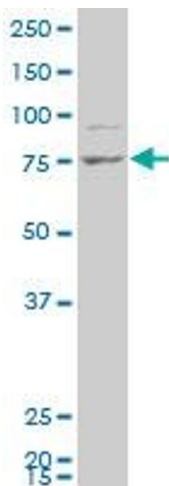
Application Details

Application Notes:	Optimal working dilution should be determined by the investigator.
Restrictions:	For Research Use only

Handling

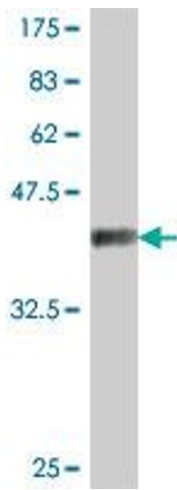
Format:	Liquid
Buffer:	50 % glycerol
Handling Advice:	Aliquot to avoid repeated freezing and thawing.
Storage:	-20 °C
Storage Comment:	Store at -20°C or lower. Aliquot to avoid repeated freezing and thawing.

Images



Western Blotting

Image 1. EIF4ENIF1 polyclonal antibody (A01), Lot # 060428JCS1 Western Blot analysis of EIF4ENIF1 expression in HepG2 .



Western Blotting

Image 2. Western Blot detection against Immunogen (37.11 kDa).