



[Go to Product page](#)

Datasheet for ABIN566057

anti-DUSP22 antibody (AA 112-184)

3 Images

2 Publications

Overview

Quantity:	100 µg
Target:	DUSP22
Binding Specificity:	AA 112-184
Reactivity:	Human
Host:	Mouse
Clonality:	Monoclonal
Conjugate:	This DUSP22 antibody is un-conjugated
Application:	Western Blotting (WB), ELISA, RNA Interference (RNAi)

Product Details

Purpose:	Mouse monoclonal antibody raised against a partial recombinant DUSP22.
Immunogen:	DUSP22 (NP_064570, 112 a.a. ~ 184 a.a) partial recombinant protein with GST tag. MW of the GST tag alone is 26 KDa.
Sequence:	EDALHTVRAG RSCANPNVGF QRQLQEFEEKH EVHQYRQWLK EEYGESPLQD AEEAKNILAA PGILKFWAFL RRL
Clone:	3D3
Isotype:	IgG2a
Cross-Reactivity:	Human
Characteristics:	Antibody Reactive Against Recombinant Protein.

Target Details

Target:	DUSP22
Alternative Name:	DUSP22 (DUSP22 Products)
Background:	Full Gene Name: dual specificity phosphatase 22 Synonyms: JKAP,JSP1,MKPX,VHX
Gene ID:	56940
NCBI Accession:	NM_020185

Application Details

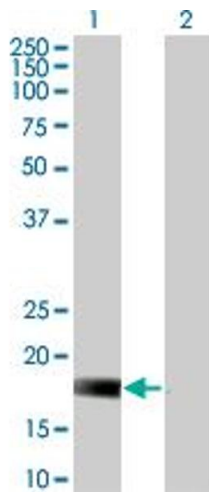
Application Notes:	Optimal working dilution should be determined by the investigator.
Restrictions:	For Research Use only

Handling

Buffer:	In 1x PBS, pH 7.4
Handling Advice:	Aliquot to avoid repeated freezing and thawing.
Storage:	-20 °C
Storage Comment:	Store at -20°C or lower. Aliquot to avoid repeated freezing and thawing.

Publications

Product cited in:	<p>Sanchez-Mut, Aso, Heyn, Matsuda, Bock, Ferrer, Esteller: "Promoter hypermethylation of the phosphatase DUSP22 mediates PKA-dependent TAU phosphorylation and CREB activation in Alzheimer's disease." in: Hippocampus, Vol. 24, Issue 4, pp. 363-8, (2014) (PubMed).</p> <p>Li, Fu, Chen, Tan: "JNK pathway-associated phosphatase dephosphorylates focal adhesion kinase and suppresses cell migration." in: The Journal of biological chemistry, Vol. 285, Issue 8, pp. 5472-8, (2010) (PubMed).</p>
-------------------	---

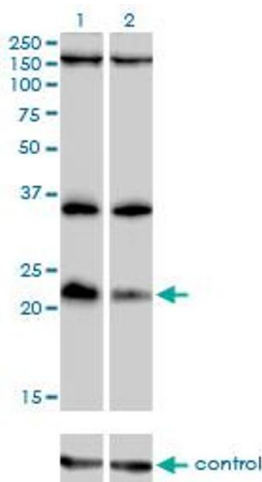


Western Blotting

Image 1. Western Blot analysis of DUSP22 expression in transfected 293T cell line by DUSP22 monoclonal antibody (M01), clone 3D3.

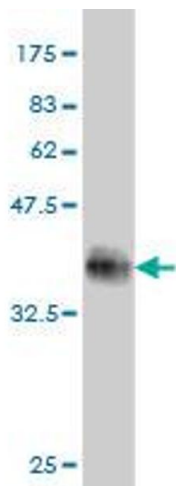
Lane 1: DUSP22 transfected lysate (20.9 kDa).

Lane 2: Non-transfected lysate.



Western Blotting

Image 2. Western blot analysis of DUSP22 over-expressed 293 cell line, cotransfected with DUSP22 Validated Chimera RNAi (Lane 2) or non-transfected control (Lane 1). Blot probed with DUSP22 monoclonal antibody (M01), clone 3D3. GAPDH (36.1 kDa) used as specificity and loading control.



Western Blotting

Image 3. Western Blot detection against Immunogen (33.77 kDa).