



[Go to Product page](#)

Datasheet for ABIN566099

anti-SALL4 antibody (AA 954-1053)

5 Images

17 Publications

Overview

Quantity:	100 µg
Target:	SALL4
Binding Specificity:	AA 954-1053
Reactivity:	Human
Host:	Mouse
Clonality:	Monoclonal
Conjugate:	This SALL4 antibody is un-conjugated
Application:	Western Blotting (WB), ELISA, Immunohistochemistry (Paraffin-embedded Sections) (IHC (p))

Product Details

Purpose:	Mouse monoclonal antibody raised against a partial recombinant SALL4.
Immunogen:	SALL4 (NP_065169, 954 a.a. ~ 1053 a.a) partial recombinant protein with GST tag. MW of the GST tag alone is 26 KDa.
Sequence:	PKEILAPSVN VDPVWVNQYT SMLNGGLAVK TNEISVIQSG GVPTLPVSLG ATSVVNNATV SKMDGSQSGI SADVEKPSAT DGVPKHQFPF FLEENKIAVS
Clone:	6E3
Isotype:	IgG1
Cross-Reactivity:	Human, Mouse
Characteristics:	Antibody Reactive Against Recombinant Protein.

Target Details

Target:	SALL4
Alternative Name:	SALL4 (SALL4 Products)
Background:	Full Gene Name: sal-like 4 (Drosophila) Synonyms: DRRS,HSAL4,MGC133050,ZNF797,dJ1112F19.1
Gene ID:	57167
NCBI Accession:	NM_020436
Pathways:	Stem Cell Maintenance , Tube Formation

Application Details

Application Notes:	Optimal working dilution should be determined by the investigator.
Restrictions:	For Research Use only

Handling

Buffer:	In 1x PBS, pH 7.4
Handling Advice:	Aliquot to avoid repeated freezing and thawing.
Storage:	-20 °C
Storage Comment:	Store at -20°C or lower. Aliquot to avoid repeated freezing and thawing.

Publications

Product cited in: Matsumoto, Ueyama, Matsumoto, Akazawa, Komori, Takeda, Murakami, Asaoka, Hojo, Tomita, Nagahara, Kajiyama, Yao, Watanabe: "Clinicopathological features of alpha-fetoprotein producing early gastric cancer with enteroblastic differentiation." in: **World journal of gastroenterology**, Vol. 22, Issue 36, pp. 8203-10, (2016) ([PubMed](#)).

Yoshida, Asano, Kawai, Kawamoto, Nakazawa, Kishimoto, Kushima: "Differential SALL4 immunoexpression in malignant rhabdoid tumours and epithelioid sarcomas." in: **Histopathology**, Vol. 66, Issue 2, pp. 252-61, (2015) ([PubMed](#)).

Kohashi, Yamada, Hotokebuchi, Yamamoto, Taguchi, Iwamoto, Oda: "ERG and SALL4 expressions in SMARCB1/INI1-deficient tumors: a useful tool for distinguishing epithelioid sarcoma from malignant rhabdoid tumor." in: **Human pathology**, Vol. 46, Issue 2, pp. 225-30, (

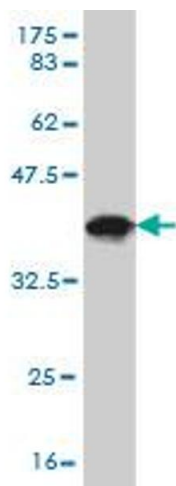
2015) ([PubMed](#)).

Shibahara, Ando, Hayashi, Sakamoto, Hasegawa, Kokudo, Fukayama: "Clinicopathologic characteristics of SALL4-immunopositive hepatocellular carcinoma." in: **SpringerPlus**, Vol. 3, pp. 721, (2015) ([PubMed](#)).

Chapman, Medrano, Chaudhary, Hamra: "NRG1 and KITL Signal Downstream of Retinoic Acid in the Germline to Support Soma-Free Syncytial Growth of Differentiating Spermatogonia." in: **Cell death discovery**, Vol. 1, (2015) ([PubMed](#)).

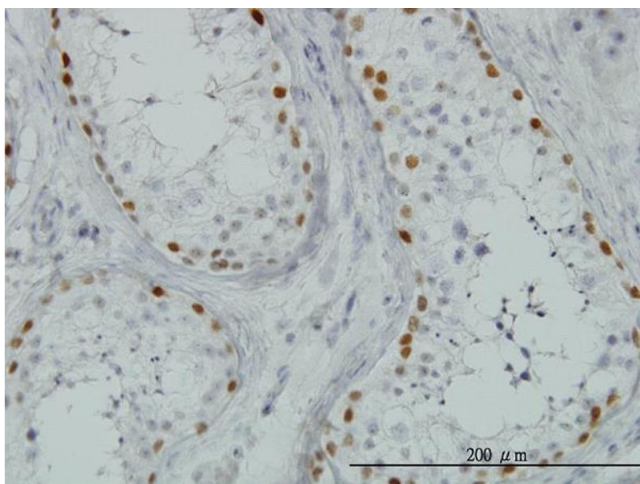
There are more publications referencing this product on: [Product page](#)

Images



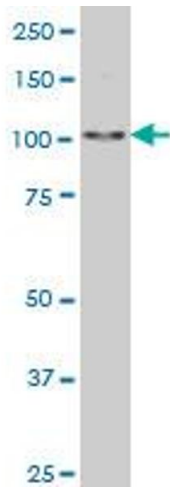
Western Blotting

Image 1. Western Blot detection against Immunogen (36.74 kDa).



Immunostaining

Image 2. Immunoperoxidase of monoclonal antibody to SALL4 on formalin-fixed paraffin-embedded human testis. [antibody concentration 0.2 ug/ml]



Western Blotting

Image 3. SALL4 monoclonal antibody (M03), clone 6E3
Western Blot analysis of SALL4 expression in HeLa S3 NE .

Please check the [product details page](#) for more images. Overall 5 images are available for ABIN566099.