



[Go to Product page](#)

Datasheet for ABIN566162  
**anti-TRIB3 antibody (AA 56-145)**

4 Images

Overview

Quantity:	100 µg
Target:	TRIB3
Binding Specificity:	AA 56-145
Reactivity:	Human
Host:	Mouse
Clonality:	Monoclonal
Conjugate:	This TRIB3 antibody is un-conjugated
Application:	Western Blotting (WB), ELISA, Immunofluorescence (IF), RNA Interference (RNAi)

Product Details

Purpose:	Mouse monoclonal antibody raised against a partial recombinant TRIB3.
Immunogen:	TRIB3 (AAH27484, 56 a.a. ~ 145 a.a) partial recombinant protein with GST tag. MW of the GST tag alone is 26 KDa.
Sequence:	PDRATAVATA SRLGPYVLE PEEGGRAYRA LHCPTGTEYT CKVYPVQEAL AVLEPYARLP PHKHVARPTE VLAGTQLLYA FFTRTHGDMH
Clone:	1H2
Isotype:	IgG1
Cross-Reactivity:	Human
Characteristics:	Antibody Reactive Against Recombinant Protein.

## Target Details

Target:	TRIB3
Alternative Name:	TRIB3 ( <a href="#">TRIB3 Products</a> )
Background:	Full Gene Name: tribbles homolog 3 (Drosophila) Synonyms: C20orf97,NIPK,SINK,SKIP3,TRB3
Gene ID:	57761
Pathways:	<a href="#">Fc-epsilon Receptor Signaling Pathway</a> , <a href="#">EGFR Signaling Pathway</a> , <a href="#">Neurotrophin Signaling Pathway</a> , <a href="#">Regulation of Lipid Metabolism by PPARalpha</a>

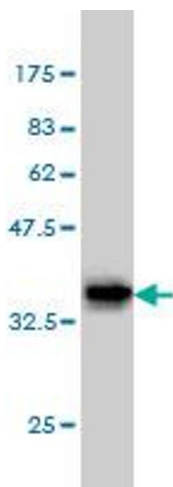
## Application Details

Application Notes:	Optimal working dilution should be determined by the investigator.
Restrictions:	For Research Use only

## Handling

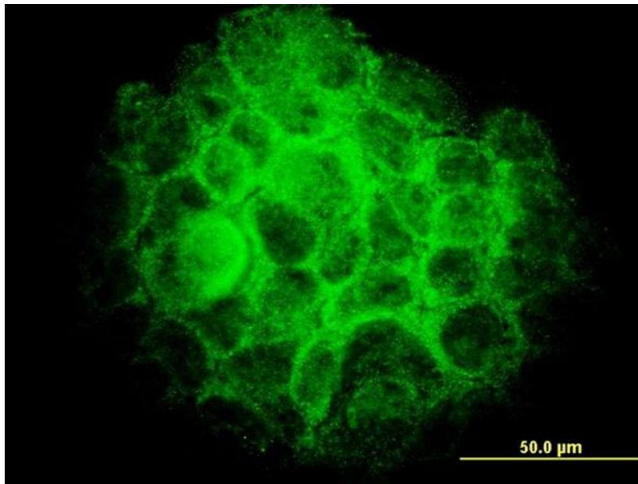
Buffer:	In 1x PBS, pH 7.4
Handling Advice:	Aliquot to avoid repeated freezing and thawing.
Storage:	-20 °C
Storage Comment:	Store at -20°C or lower. Aliquot to avoid repeated freezing and thawing.

## Images



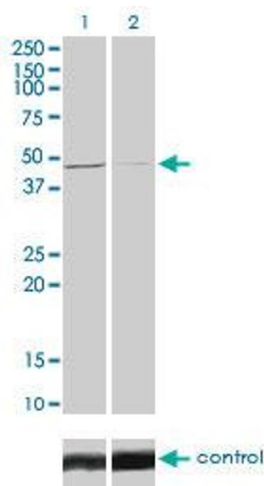
### Western Blotting

**Image 1.** Western Blot detection against Immunogen (35.53 kDa).



### Immunofluorescence

**Image 2.** Immunofluorescence of monoclonal antibody to TRIB3 on A-431 cell. [antibody concentration 10 ug/ml]



### Western Blotting

**Image 3.** Western blot analysis of TRIB3 over-expressed 293 cell line, cotransfected with TRIB3 Validated Chimera RNAi (Lane 2) or non-transfected control (Lane 1). Blot probed with TRIB3 monoclonal antibody (M03) clone 1H2. GAPDH ( 36.1 kDa ) used as specificity and loading control.

Please check the [product details page](#) for more images. Overall 4 images are available for ABIN566162.