



Datasheet for ABIN5662278
anti-C-Peptide antibody



[Go to Product page](#)

2 Images

Overview

Quantity:	100 µL
Target:	C-Peptide
Reactivity:	Human
Host:	Mouse
Clonality:	Monoclonal
Conjugate:	This C-Peptide antibody is un-conjugated
Application:	Western Blotting (WB), Immunohistochemistry (IHC)

Product Details

Target Details

Target:	C-Peptide
Abstract:	C-Peptide Products

Application Details

Application Notes:	Optimal working dilution should be determined by the investigator.
Restrictions:	For Research Use only

Handling

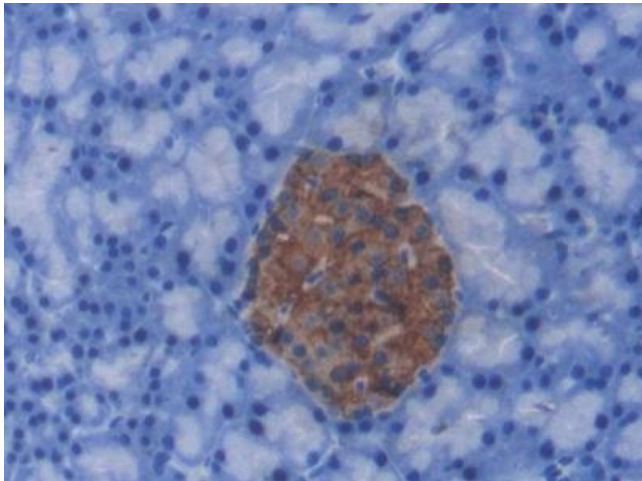
Concentration:	Lot specific
Buffer:	PBS, pH 7.4, containing 0.01 % SKL, 1 mM DTT, 5 % Trehalose and Proclin300.

Handling

Storage: 4 °C, -20 °C

Storage Comment: Avoid repeated freeze/thaw cycles. Store at 4 °C for frequent use. Aliquot and store at -20 °C for 12 months.

Images



Immunohistochemistry (Paraffin-embedded Sections)

Image 1. DAB staining on IHC-P; Samples: Rat Pancreas Tissue)



Western Blotting

Image 2. Western Blot; Sample: Human BXPC3 cell lysate;
Primary Ab: 6µg/ml Mouse Anti-Porcine CP Antibody
Second Ab: 0.2µg/mL HRP-Linked Caprine Anti-Mouse IgG Polyclonal Antibody