



[Go to Product page](#)

Datasheet for ABIN5662294

anti-IgG antibody

2 Images

Overview

Quantity:	100 µL
Target:	IgG
Reactivity:	Rabbit
Host:	Mouse
Clonality:	Monoclonal
Conjugate:	This IgG antibody is un-conjugated
Application:	Western Blotting (WB), Immunocytochemistry (ICC), Immunohistochemistry (IHC), Immunoprecipitation (IP)

Product Details

Target Details

Target:	IgG
Alternative Name:	Immunoglobulin G (IgG Products)
Target Type:	Antibody

Application Details

Application Notes:	Western blotting: 0.5-2 µg/mL, Immunohistochemistry: 5-20 µg/mL Immunocytochemistry: 5-20 µg/mL
--------------------	---

Restrictions:	For Research Use only
---------------	-----------------------

Handling

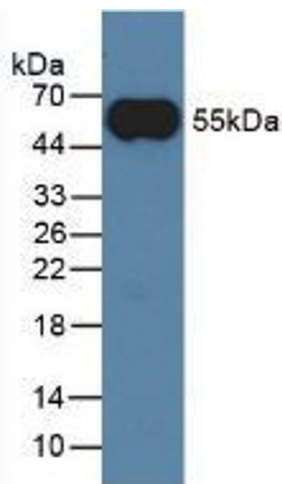
Concentration:	Lot specific
Buffer:	PBS, pH 7.4, containing 0.02 % Sodium azide, 50 % glycerol.
Storage:	4 °C, -20 °C
Storage Comment:	Avoid repeated freeze/thaw cycles. Store at 4 °C for frequent use. Aliquot and store at -20 °C for 12 months.

Images



Western Blotting

Image 1. Western Blot; Sample: Rabbit Serum; Primary Ab: 1µg/ml Mouse Anti-Rabbit IgG Antibody Second Ab: 0.2µg/mL HRP-Linked Caprine Anti-Mouse IgG Polyclonal Antibody



Western Blotting

Image 2. Western Blot; Sample: Rabbit Serum.