



[Go to Product page](#)

Datasheet for ABIN566234
anti-CENPK antibody (AA 1-269)

4 Images

Overview

Quantity:	100 µg
Target:	CENPK
Binding Specificity:	AA 1-269
Reactivity:	Human
Host:	Mouse
Clonality:	Monoclonal
Conjugate:	This CENPK antibody is un-conjugated
Application:	Western Blotting (WB), ELISA, Immunofluorescence (IF)

Product Details

Purpose:	Mouse monoclonal antibody raised against a full length recombinant CENPK.
Immunogen:	CENPK (AAH05400.1, 1 a.a. ~ 269 a.a) full-length recombinant protein with GST tag. MW of the GST tag alone is 26 KDa.
Sequence:	MNQEDLDPDS TTDVGDVTNT EEELIRECEE MWKDMEECQN KLSLIGTETL TDSNAQLSLL IMQVKCLTAE LSQWQKKTPE TIPLTEDVLI TLGKEEFQKL RQDLEMVLST KESKNEKLKE DLEREQRWLD EQQIMESLN VLHSELKNKV ETFSESRIFN ELKTKMLNIK EYKEKLLSTL GEFLEDHFPL PDRSVK KKKK NIQESSVNL TLHEMLEILI NRLFDVPHDP YVKISDSFWP PYVELLLRNG IALRHPEDPT RIRLEAFHQ
Clone:	1G2-1B10
Isotype:	IgG1
Cross-Reactivity:	Human

Product Details

Characteristics: Antibody Reactive Against Recombinant Protein.

Target Details

Target: CENPK

Alternative Name: CENPK ([CENPK Products](#))

Background: Full Gene Name: centromere protein K
Synonyms: AF5alpha,CENP-K,FKSG14,P33,Solt

Gene ID: 64105

Application Details

Application Notes: Optimal working dilution should be determined by the investigator.

Restrictions: For Research Use only

Handling

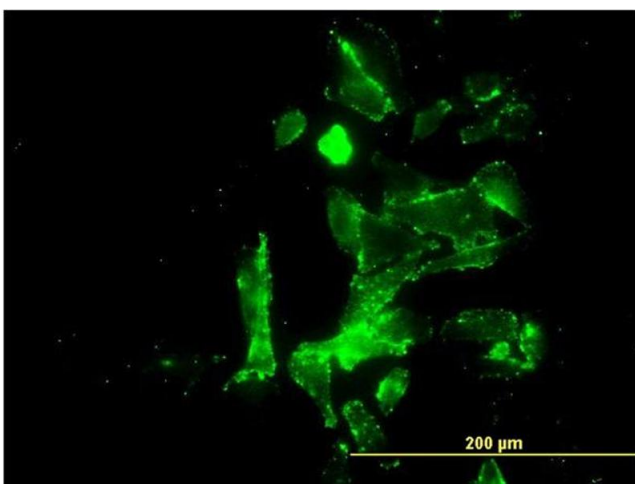
Buffer: In 1x PBS, pH 7.4

Handling Advice: Aliquot to avoid repeated freezing and thawing.

Storage: -20 °C

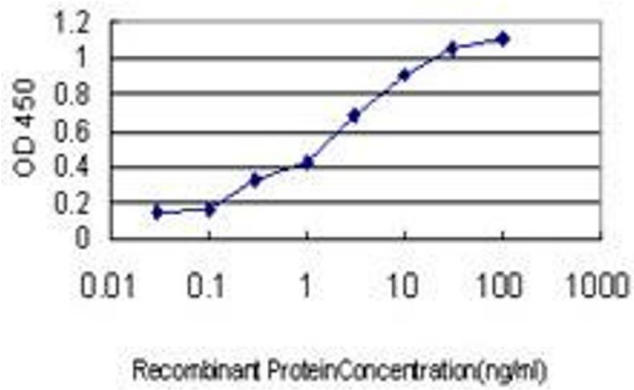
Storage Comment: Store at -20°C or lower. Aliquot to avoid repeated freezing and thawing.

Images



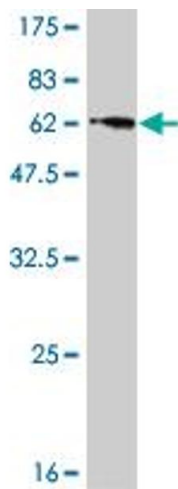
Immunofluorescence

Image 1. Immunofluorescence of monoclonal antibody to CENPK on HepG2 cell. [antibody concentration 10 ug/ml]



ELISA

Image 2. Detection limit for recombinant GST tagged FKSG14 is approximately 0.03ng/ml as a capture antibody.



Western Blotting

Image 3. Western Blot detection against Immunogen (55.33 kDa).

Please check the [product details page](#) for more images. Overall 4 images are available for ABIN566234.