



[Go to Product page](#)

Datasheet for ABIN566245  
**anti-Sema4a antibody (AA 33-132)**

1 Image

Overview

Quantity:	50 µL
Target:	Sema4a
Binding Specificity:	AA 33-132
Reactivity:	Human
Host:	Mouse
Clonality:	Polyclonal
Conjugate:	This Sema4a antibody is un-conjugated
Application:	Western Blotting (WB), ELISA

Product Details

Purpose:	Mouse polyclonal antibody raised against a partial recombinant SEMA4A.
Immunogen:	SEMA4A (NP_071762, 33 a.a. ~ 132 a.a) partial recombinant protein with GST tag.
Sequence:	GGGQGPMPRV RYYAGDERRA LSFFHQKGLQ DFDTLLLSGD GNTLYVGARE AILALDIQDP GVPRLKNMIP WPASDRKKSE CAFKKKSNET QCFNFIRVLV
Cross-Reactivity:	Human
Characteristics:	Antibody Reactive Against Recombinant Protein.

Target Details

Target:	Sema4a
Alternative Name:	SEMA4A ( <a href="#">Sema4a Products</a> )

## Target Details

Background: Full Gene Name: sema domain, immunoglobulin domain (Ig), transmembrane domain (TM) and short cytoplasmic domain, (semaphorin) 4A  
Synonyms: CORD10,FLJ12287,RP35,SEMAB,SEMB

Gene ID: 64218

NCBI Accession: [NM\\_022367](#)

## Application Details

Application Notes: Optimal working dilution should be determined by the investigator.

Restrictions: For Research Use only

## Handling

Format: Liquid

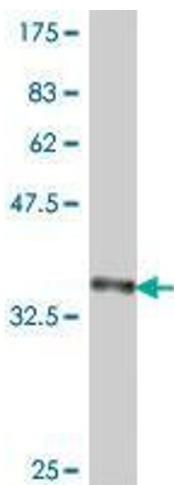
Buffer: 50 % glycerol

Handling Advice: Aliquot to avoid repeated freezing and thawing.

Storage: -20 °C

Storage Comment: Store at -20°C or lower. Aliquot to avoid repeated freezing and thawing.

## Images



### Western Blotting

**Image 1.** Western Blot detection against Immunogen (37.11 kDa) .