

Datasheet for ABIN566254
anti-RFWD2 antibody (AA 632-731)



[Go to Product page](#)

6 Images

Overview

Quantity:	100 µg
Target:	RFWD2
Binding Specificity:	AA 632-731
Reactivity:	Human
Host:	Mouse
Clonality:	Monoclonal
Conjugate:	This RFWD2 antibody is un-conjugated
Application:	Western Blotting (WB), ELISA, Immunofluorescence (IF)

Product Details

Purpose:	Mouse monoclonal antibody raised against a partial recombinant RFWD2.
Immunogen:	RFWD2 (NP_071902, 632 a.a. ~ 731 a.a) partial recombinant protein with GST tag. MW of the GST tag alone is 26 KDa.
Sequence:	CLRSFKGHIN EKNFVGLASN GDYIACGSEN NSLYLYYKGL SKTLLTFKFD TVKSVLDKDR KEDDTNEFVS AVCWRALPDG ESNVLIANS QGTIKVLELV
Clone:	1E4
Isotype:	IgG2b
Cross-Reactivity:	Human, Mouse
Characteristics:	Antibody Reactive Against Recombinant Protein.

Target Details

Target:	RFWD2
Alternative Name:	RFWD2 (RFWD2 Products)
Background:	Full Gene Name: ring finger and WD repeat domain 2 Synonyms: COP1,FLJ10416,RNF200
Gene ID:	64326
NCBI Accession:	NM_022457
Pathways:	Photoperiodism

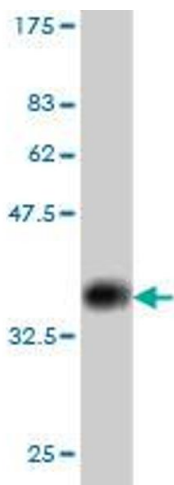
Application Details

Application Notes:	Optimal working dilution should be determined by the investigator.
Restrictions:	For Research Use only

Handling

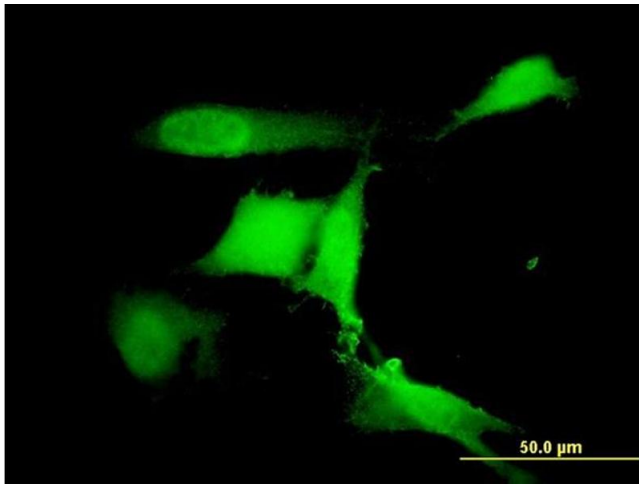
Buffer:	In 1x PBS, pH 7.4
Handling Advice:	Aliquot to avoid repeated freezing and thawing.
Storage:	-20 °C
Storage Comment:	Store at -20°C or lower. Aliquot to avoid repeated freezing and thawing.

Images



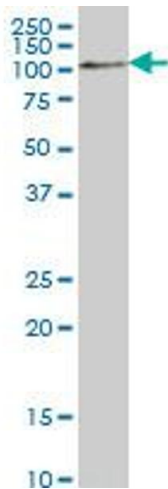
Western Blotting

Image 1. Western Blot detection against Immunogen (36.74 kDa).



Immunofluorescence

Image 2. Immunofluorescence of monoclonal antibody to RFWD2 on NIH/3T3 cell. [antibody concentration 10 ug/ml]



Western Blotting

Image 3. RFWD2 monoclonal antibody (M01), clone 1E4 Western Blot analysis of RFWD2 expression in NIH/3T3 .

Please check the [product details page](#) for more images. Overall 6 images are available for ABIN566254.