



[Go to Product page](#)

Datasheet for ABIN5662598

ExcelBand™ 3-color Broad Range Protein Marker

2 Images

Overview

Quantity:	2 x 250 µL
Detection Range:	5 kDa - 245 kDa
Minimum Detection Limit:	5 kDa
Application:	SDS-PAGE (SDS)

Product Details

Purpose:	protein molecular weight marker that range in size from 5 to 245 kDa.
Brand:	ExcelBand™
Characteristics:	The ExcelBand 3-color Broad Range Protein Marker is a ready-to-use three-color protein standard with 13 pre-stained proteins covering a wide range of molecular weights from 5 to 245 kDa in Tris-Glycine buffer (3.5 kDa to 235 kDa in Bis-Tris (MOPS))
Components:	Pre-stained protein marker

Application Details

Application Notes:	Optimal working dilution should be determined by the investigator.
Comment:	Approximately 0.1~0.4 mg/ml of each protein in the buffer (20 mM Tris-phosphate (pH 7.5), 2% SDS, 0.2 mM DTT, 3.6 M urea, and 15% (v/v) glycerol).
Restrictions:	For Research Use only

Handling

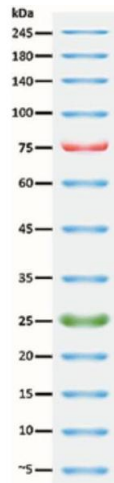
Format:	Liquid
---------	--------

Handling

Storage: 4 °C, -20 °C

Storage Comment: 4°C for 3 months, -20°C for 24 months

Images



SDS-PAGE

Image 1.



SDS-PAGE

Image 2.